

**RWE Npower Renewables
Gwynt y Mor Offshore Wind Farm
Marine Coordinator Navigation Warning**

Issuer : Gwynt y Mor Marine Coordinator

Date of Issue: 01.07.11

NTM no : NAV - 001

For enquiries on this Navigation Warning please contact:

lee.cornwell@rwe.com or 07557 319473



Commencement of Trinity House Navigation Buoy Installation

Duration: 11th – 15th July 2011

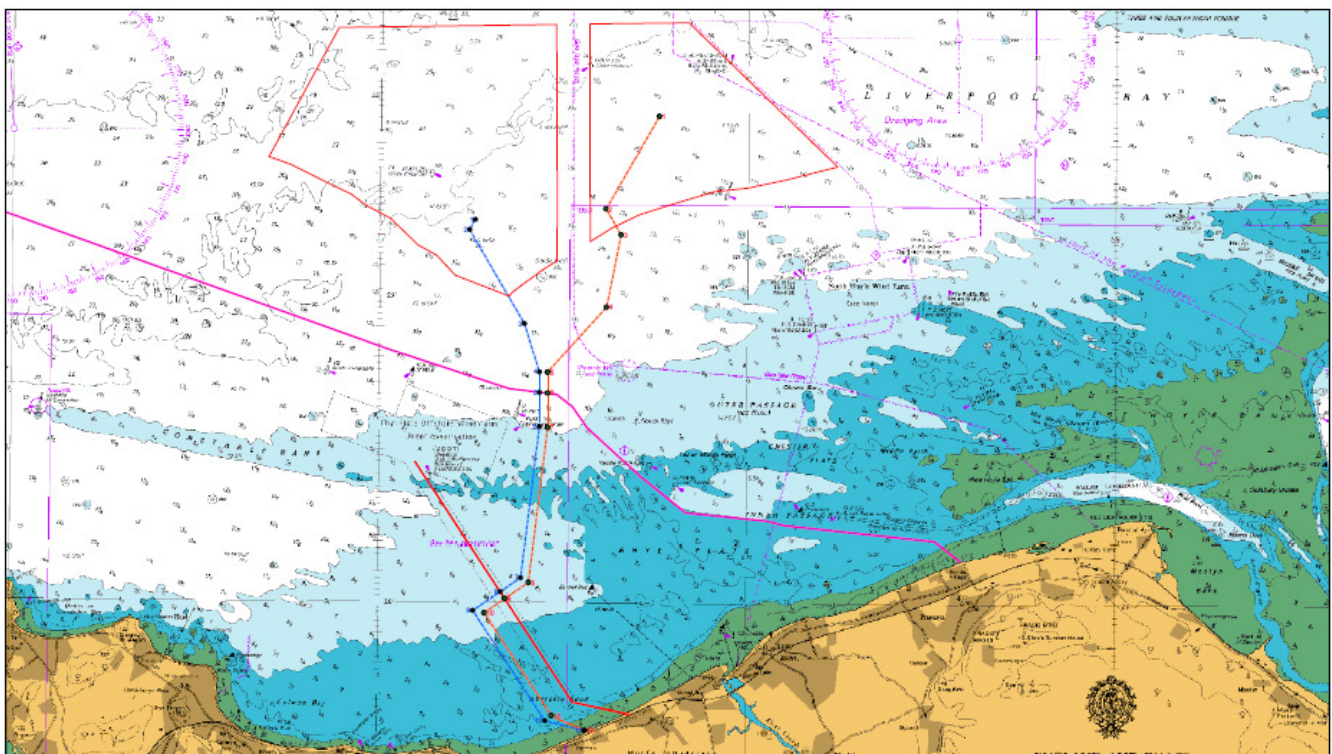
Please be advised that the demarcation of the Gwynt y Mor Offshore Wind Farm is to commence as per the above mentioned dates.

There will be 9 navigation buoys installed by the Trinity House Vessel "Galatea".

All coordinates are below.

At the same time, Galatea will remove the "North Hoyle" North Cardinal Buoy from position 53deg 26.7'N, 003deg 30.6'W. Once installed, Trinity House will then issue a notice to the United Kingdom Hydrographic Office, who will then issue a chart correction notice.

All vessels are requested to give Galatea a wide berth of 500m.
Galatea will keep a listening watch on VHF 16 during installation.

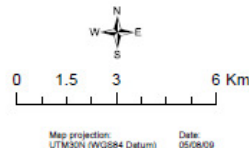


**Gwynt y Mor
Offshore Wind Farm
Export Cable Route**

- Legend**
- Metic Proposed Cable Route - 1st Phase
 - Metic Proposed Cable Route - 2nd Phase
 - Metic Proposed Cable Route Points - 1st Phase
 - Metic Proposed Cable Route Points - 2nd Phase
 - Ryls Export cable route
 - Ryls cable route
 - Ryls Turbine Boundary

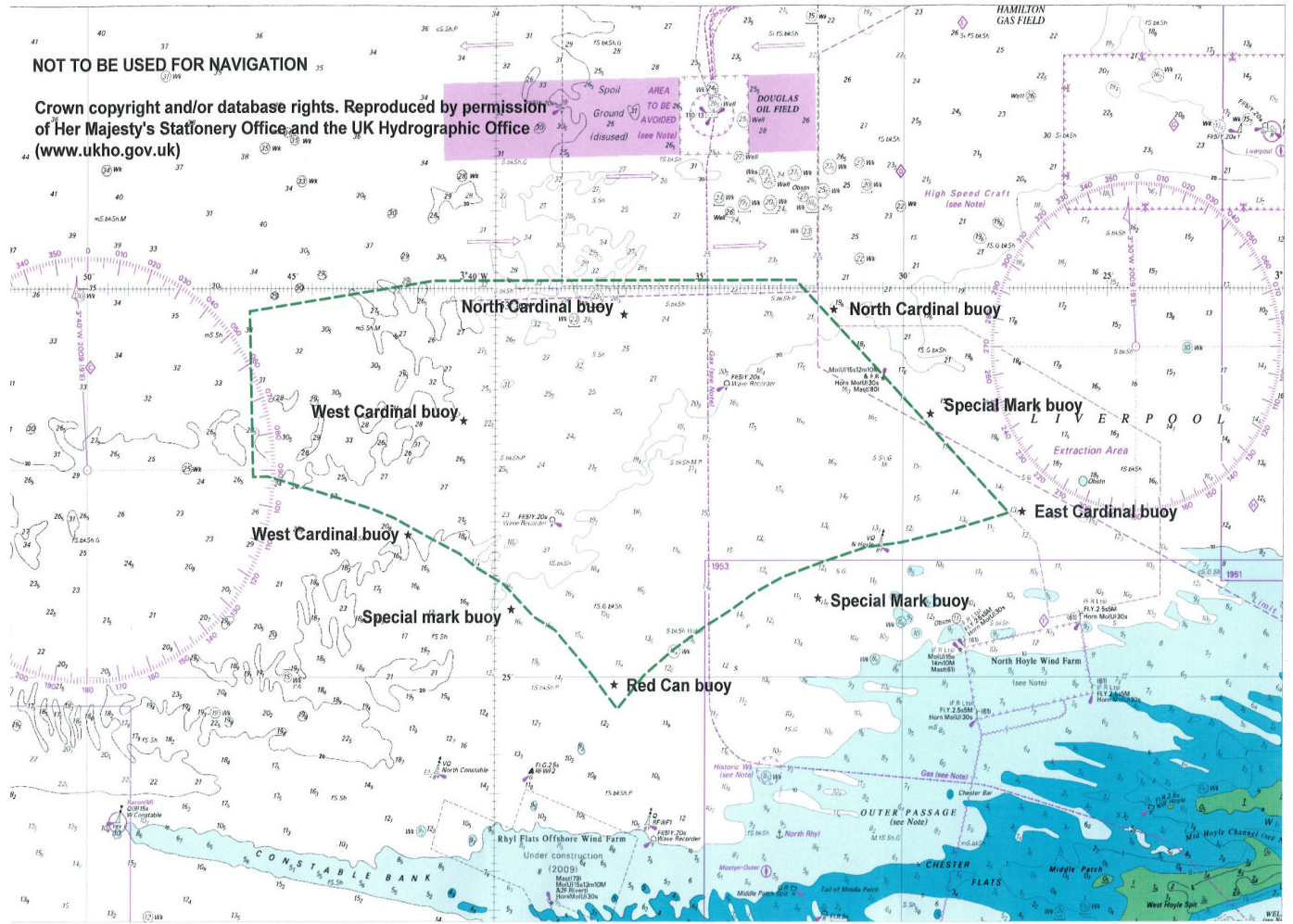
© British Crown and SeaZone Solutions Limited.
All rights reserved.
Date Licence 05/2003.002

This product has been derived in part from material obtained from the UK Hydrographic Office with the permission of the Controller of Her Majesty's Stationery Office and UK Hydrographic Office (www.ukho.gov.uk).
NOT TO BE USED FOR NAVIGATION



NOT TO BE USED FOR NAVIGATION

Crown copyright and/or database rights. Reproduced by permission of Her Majesty's Stationery Office and the UK Hydrographic Office (www.ukho.gov.uk)



Gwynt-y-Mor Wind Farm Buoy Deployment 11th to 15th July 2011

Name	Buoy Type	Light Charac	Latitude	Longitude
GYM S	Red Can	Fl R 2.5s	53 deg 24'.90N	003 deg 37'.08W.
GYM SW	Special Mark	Fl Y 2.5s	53 deg 25'.87N	003 deg 39'.60W
GYM W	West Cardinal	VQ(9) 10s	53 deg 26'.832N	003 deg 42'.129W.
GYM NW	West Cardinal	Q(9) 15s	53 deg 28'.303N	003 deg 40'.772W
GYM NNW	North Cardinal	Q	53 deg 29'.670N	003 deg 36'.857W
GYM N	North Cardinal	VQ	53 deg 29'.735N	003 deg 31'.710W
GYM NE	Special Mark	Fl Y 2.5s	53 deg 28'.390N	003 deg 29'.340W
GYM E	East Cardinal	VQ(3) 5s	53 deg 27'.130N	003 deg 27'.078W
GYM SE	Special Mark	Fl Y 2.5s	53 deg 26'.015N	003 deg 32'.080W



Distribution: As per GyM Notices To Mariners Distribution List. Please feel free to share the information.

If you don't wish to receive updated notices for the project, please contact the person named above.