

RWE npower renewables
Gwynt y Mor Offshore Wind Farm
Marine Coordinator Notice To Mariners

Issuer : Gwynt y Mor Marine Coordinator

Issue Date: 9th August 2012

NTM no : NAV - 017

For enquiries on this Notice to Mariners please contact:

lee.cornwell@rwe.com or 07557 319473
gymmarinecoordinators@ymail.com
or 07827 244495



Trinity House Navigation Buoy's Annual servicing

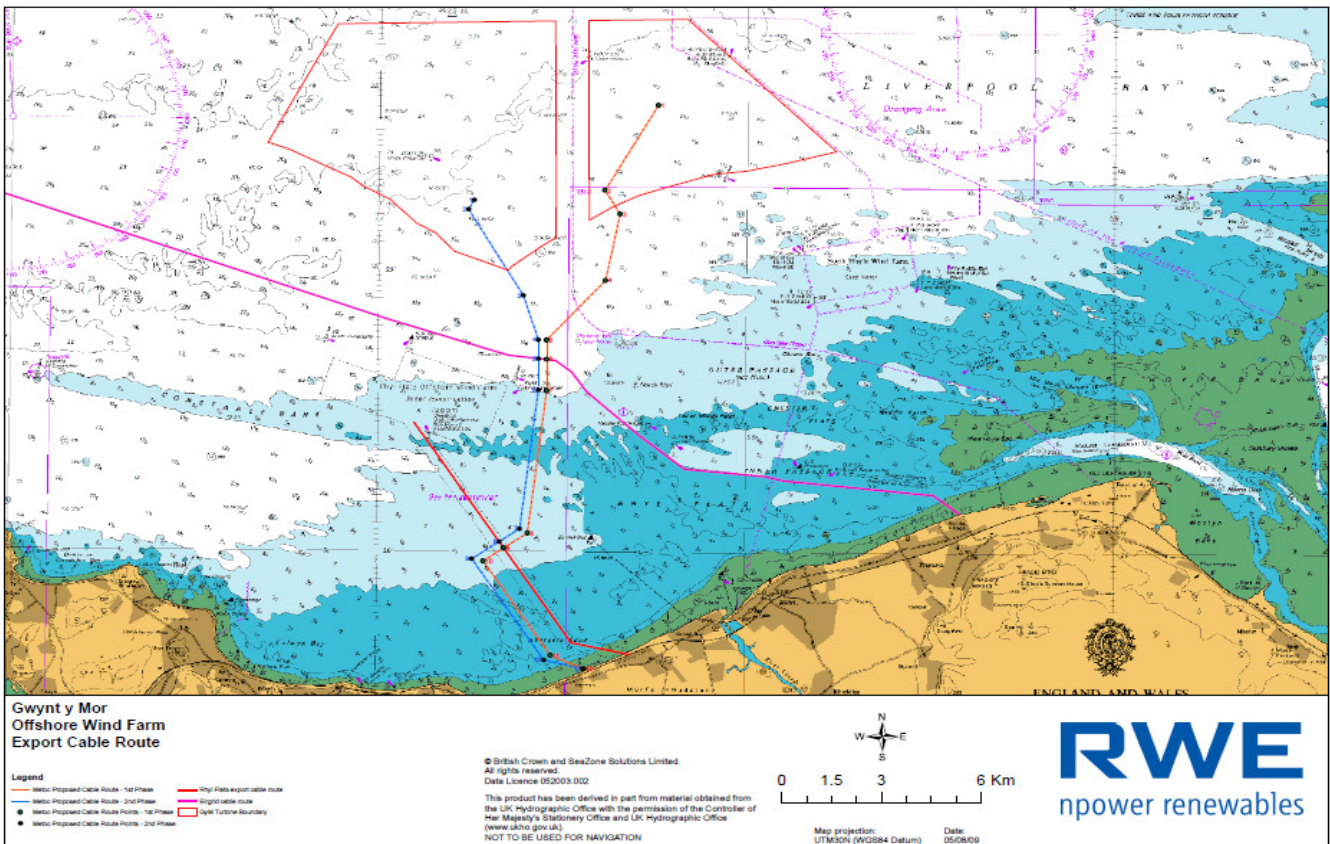
Duration: 2 Weeks [commencing circa 16th Aug 2012]

Please be advised that the annual servicing of the Gwynt y Mor Offshore Wind Farm navigational buoys will be taking place during the last 2 weeks of August 2012.

There are 9 navigation buoys to be serviced by the Trinity House Vessel "Patricia".

All coordinates are below.

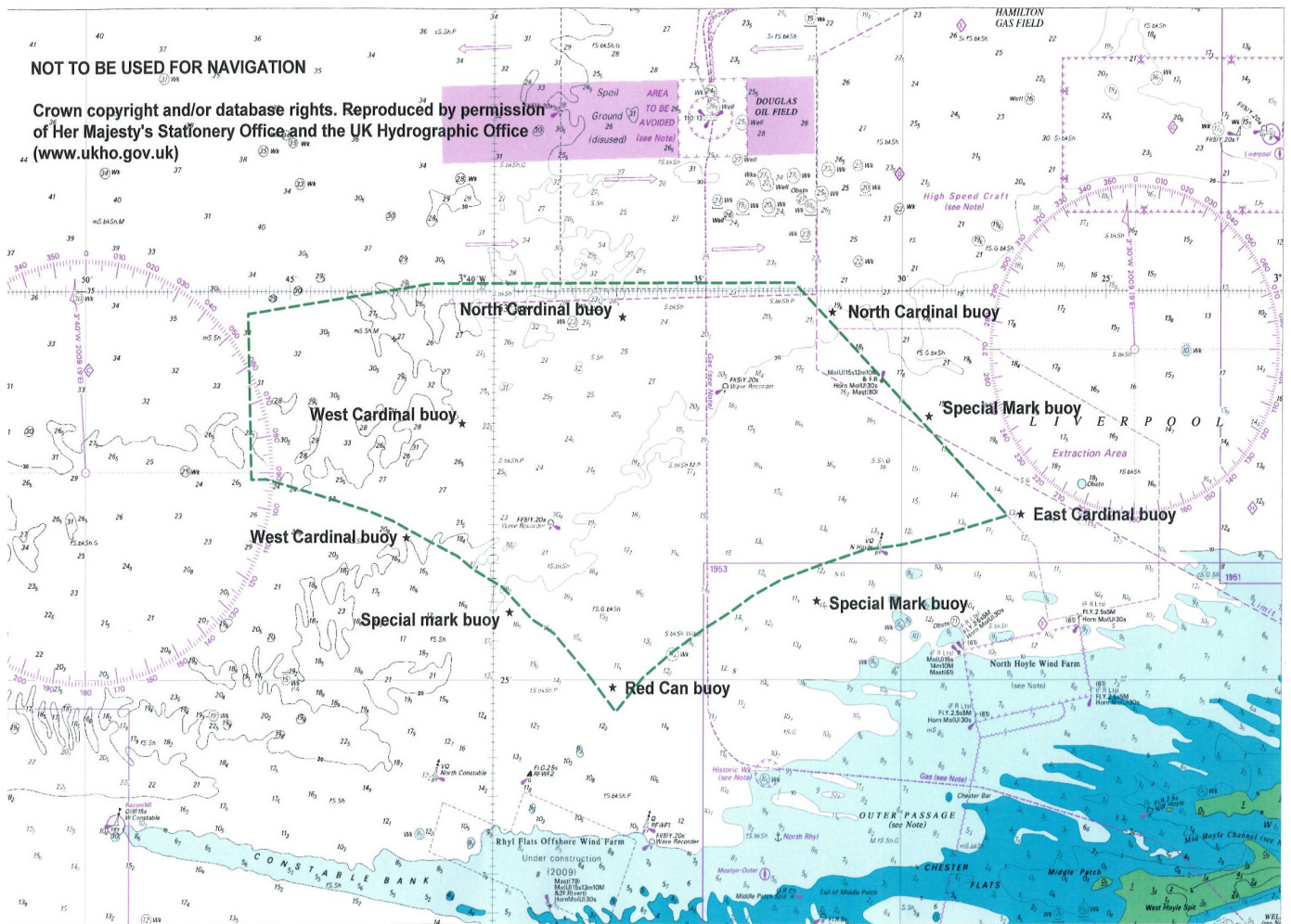
Primary means of communication will be VHF ch 16.



Admiralty Chart Layout of Gwynt y Mor including Export Cable Routes

NOT TO BE USED FOR NAVIGATION

Crown copyright and/or database rights. Reproduced by permission of Her Majesty's Stationery Office and the UK Hydrographic Office (www.ukho.gov.uk)



Name	Buoy Type	Light Charac	Latitude	Longitude
GYM S	Red Can	FI R 2.5s	53 deg 24'.90N	003 deg 37'.08W.
GYM SW	Special Mark	FI Y 2.5s	53 deg 25'.87N	003 deg 39'.60W
GYM W	West Cardinal	VQ(9) 10s	53 deg 26'.832N	003 deg 42'.129W.
GYM NW	West Cardinal	Q(9) 15s	53 deg 28'.303N	003 deg 40'.772W
GYM NNW	North Cardinal	Q	53 deg 29'.670N	003 deg 36'.857W
GYM N	North Cardinal	VQ	53 deg 29'.735N	003 deg 31'.710W
GYM NE	Special Mark	FI Y 2.5s	53 deg 28'.390N	003 deg 29'.340W
GYM E	East Cardinal	VQ(3) 5s	53 deg 27'.130N	003 deg 27'.078W
GYM SE	Special Mark	FI Y 2.5s	53 deg 26'.015N	003 deg 32'.080W

Positions of Navigational Buoys at Gwynt y Mor Offshore Wind Farm



THV Patricia

Distribution: As per GyM Notices To Mariners Distribution List. Please feel free to share the information.

If you don't wish to receive updated notices for the project, please contact the person named above.