

RWE npower renewables  
Gwynt y Mor Offshore Wind Farm  
Marine Coordinator Notice To Mariners

Issuer : Gwynt y Mor Marine Coordinator

Date of Issue: 28.11.12

NTM no : GyM - 023

For enquiries on this Notice to Mariners please contact:

[lee.cornwell@rwe.com](mailto:lee.cornwell@rwe.com) or 07557 319473  
[gym.mcc@rwe.com](mailto:gym.mcc@rwe.com) or 07827 244495



Export cable work By Cable lay barge Pontra Maris assisted by Anchor handling tugs Nova K and Claudia B  
Duration: 1<sup>st</sup> Dec 2012 till mid Dec 2012 (Depending on Weather) duration may extend

Please be advised that the Pontramaris assisted by Anchor handling support tugs Nova K and ClaUdia B, will be jointing the Gwynt yMor wind farm Export cable at a position detailed below, work expected to take approx 10 days.

The Pontamaris has a 6 point mooring system and will require a 1000m Exclusion zone when on location and will deploy anchors with buoys. The vessel's will be operating At the positions detailed below and indicated on the Chart picture on page 2..  
**Cable 1** (1<sup>st</sup> end laid from the beach) Lat: 53 deg 21.94159' N Long: 003 deg 35.80597' W. (KP 10.124). The cable has a 40m wire pennant laid along the route from the cable end. At the end of this 40m wire is a 1m wire pennant as a riser with a subsea plough float attached.

**Cable 1** (2<sup>nd</sup> end from OSP East) Lat: 53 deg 21.73746' N Long: 003 deg 35.79205' W. (KP 9.745). The cable has a 22m wire pennant laid along the route from the cable end. At the end of this 22m wire is a 1m wire pennant as a riser with a subsea plough float attached. VHF 16 will be monitored at all times.

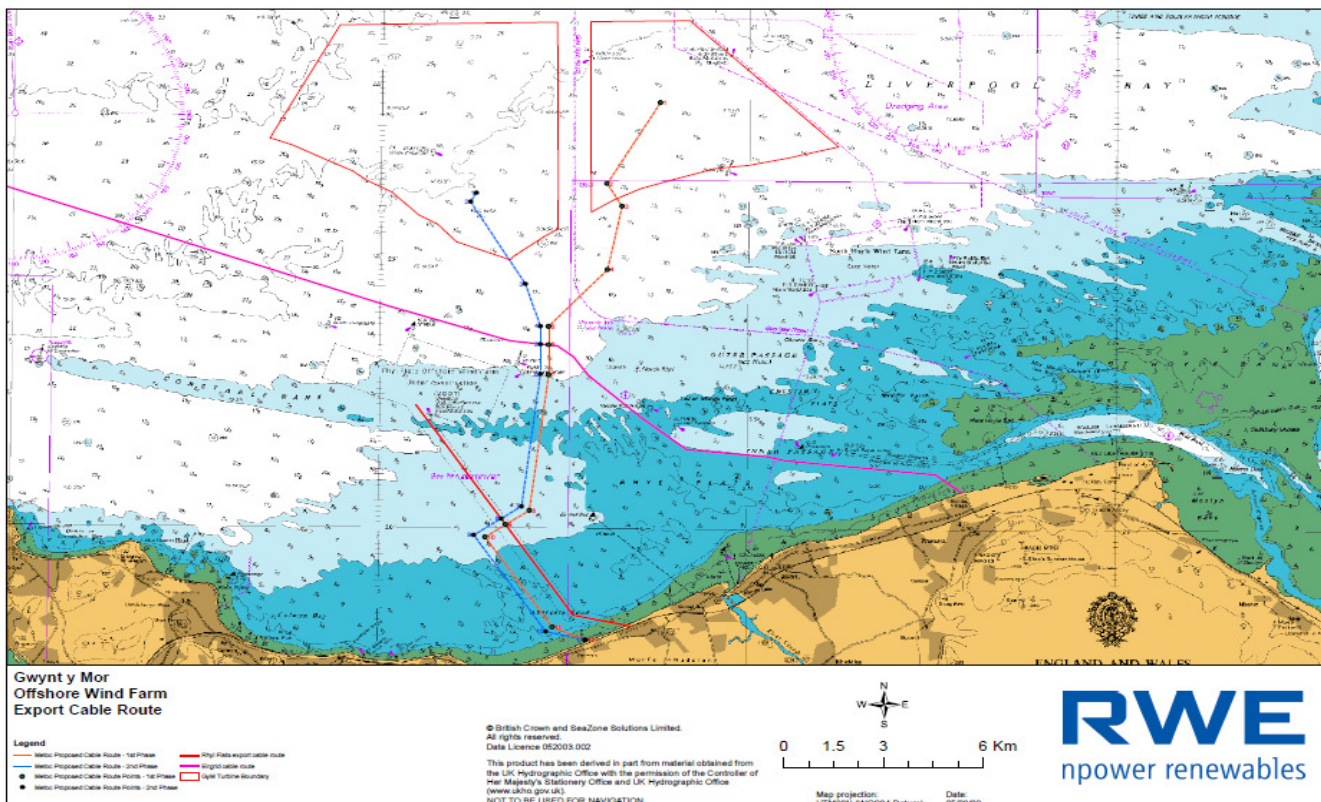
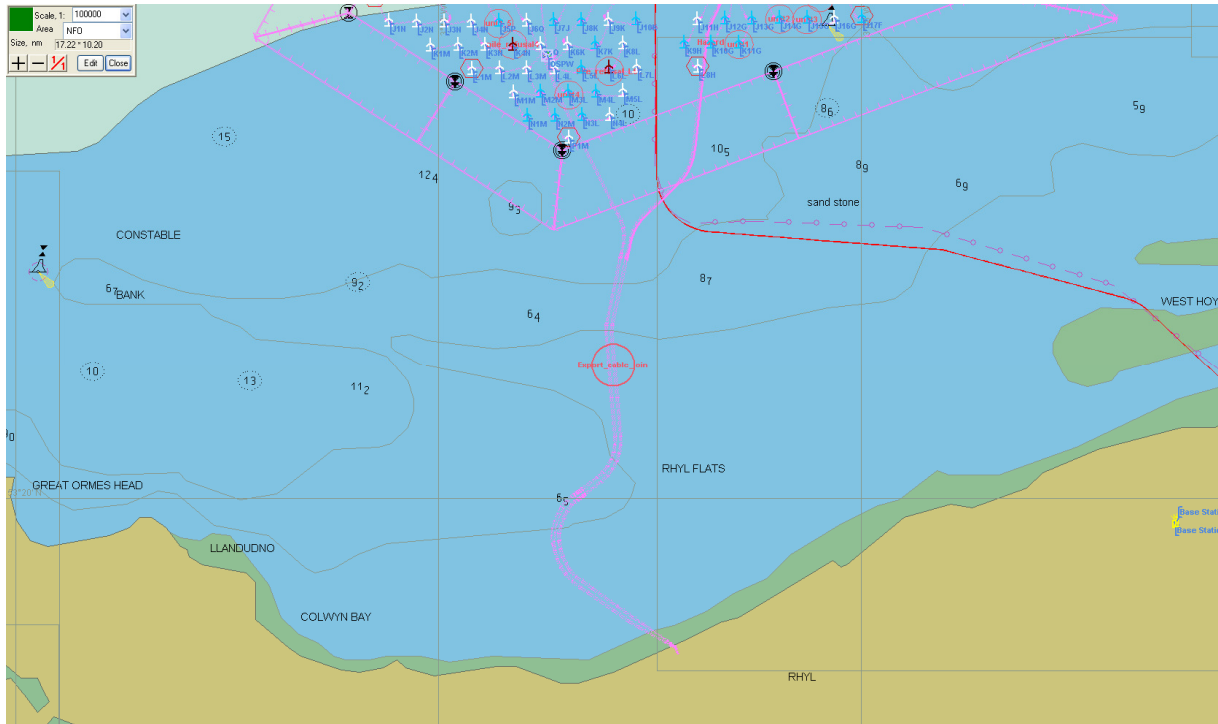


Diagram showing area of work for cable joining



Vessel's involved in work

### Pontramaris



**Nova K**



**Claudia B**



**Distribution: As per GyM Notices To Mariners Distribution List. Please feel free to share the information.**

**If you don't wish to receive updated notices for the project, please contact the person(s) named above.**