

**RWE npower renewables**  
**Gwynt y Mor Offshore Wind Farm**  
**Marine Coordinator Notice To Mariners**

**Issuer : Gwynt y Mor Marine Coordinator**

**Date of Issue: 27/02/2013**

**NTM no : GyM - 001/2013**

For enquiries on this Notice to Mariners please contact:

[lee.cornwell@rwe.com](mailto:lee.cornwell@rwe.com) or 07557 319473  
[gym.mcc@rwe.com](mailto:gym.mcc@rwe.com) or 07827 244495



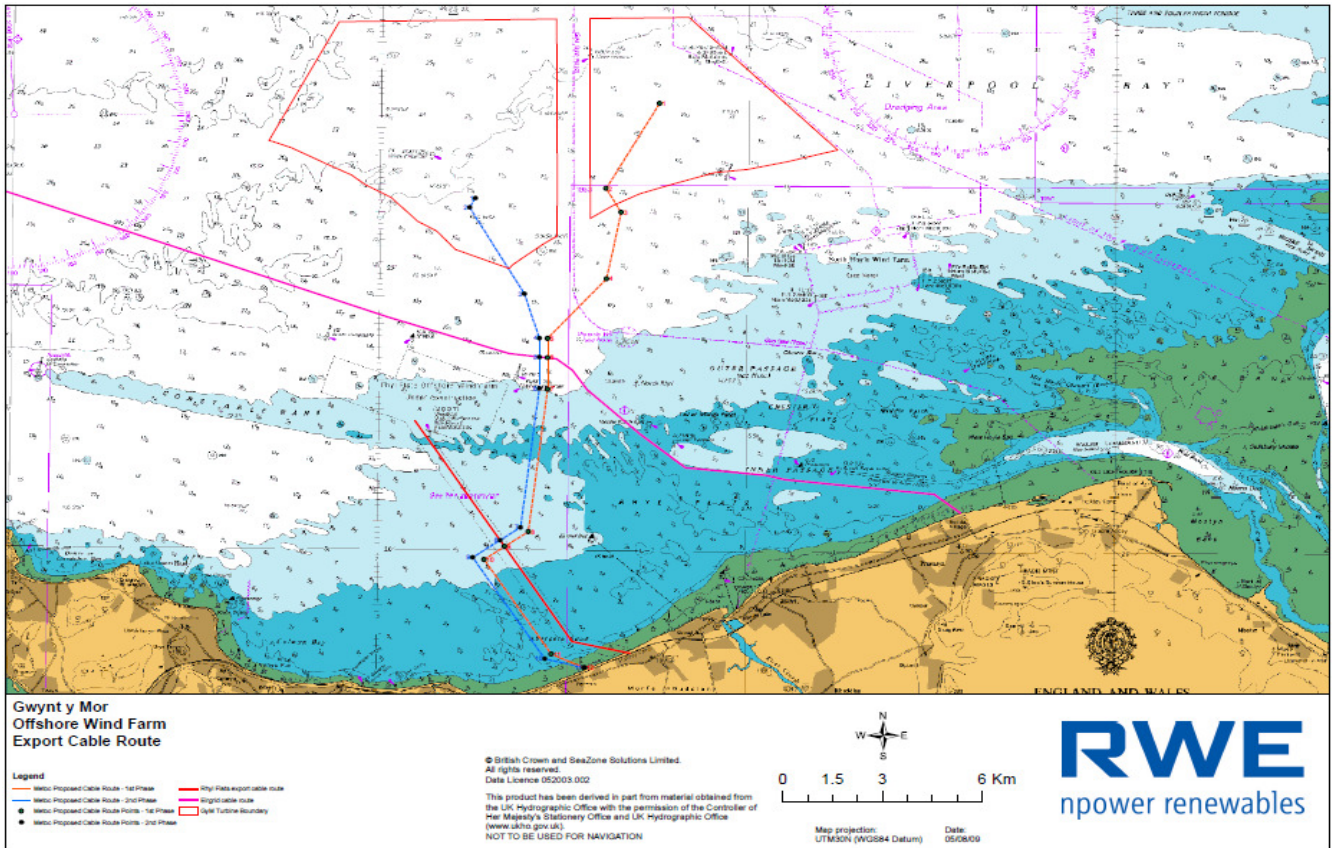
**Commencement of inter array cable installation.**

**Duration: From the end of February 2013 until further notice.**

Please be advised that the installation of the inter array cables will commence from the end of February 2013 until further notice at various locations within the GyM Windfarm.

The works will be carried out by the vessel Polar Prince [picture on page 2].

The vessel will be within the GyM field during the work and a 500m clearance from the vessel is requested.  
VHF 16 will be monitored at all times.



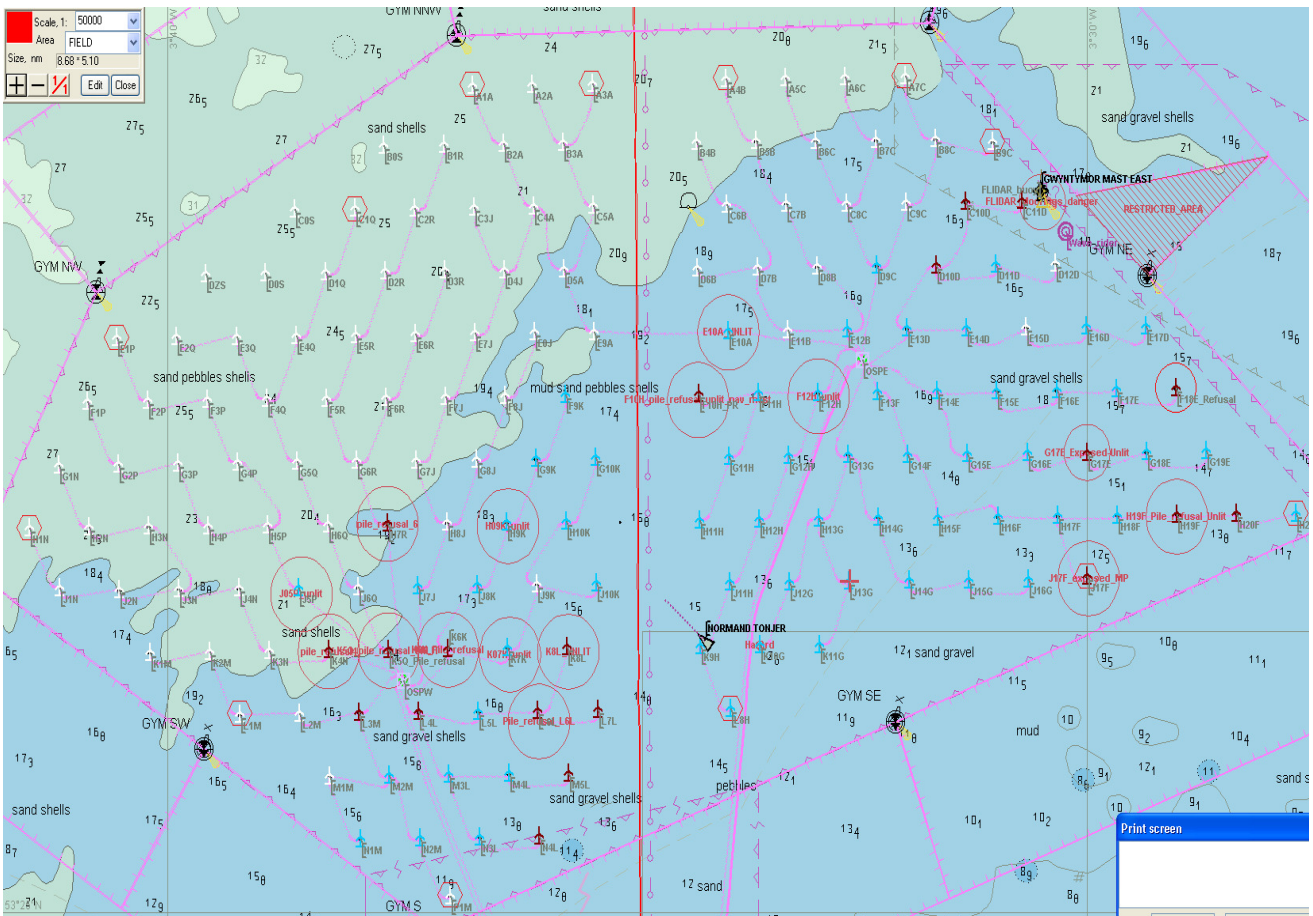
**Admiralty Chart Layout of Gwynt y Mor Windfarm including Export Cable Routes**

# Polar Prince



© Derrick Johnson  
MarineTraffic.com

## Wind Turbine Generator Layout



**Distribution: As per GyM Notices To Mariners Distribution List. Please feel free to share the information.**

**If you don't wish to receive updated notices for the project, please contact the person(s) named above.**