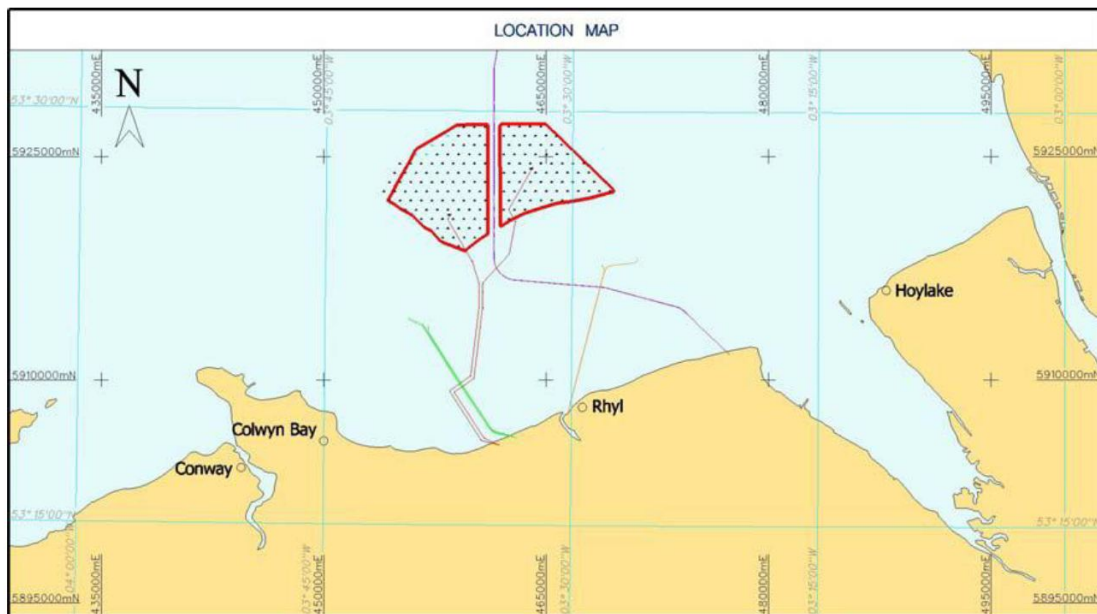


NOTICE TO MARINERS

Please be advised that Osiris Projects will be carrying out marine geophysical survey operations on the Export Cable route for the Gwynt-y-Mor windfarm. The route runs from Kinmel Bay on the North Wales coast out to the windfarm development area. Survey operations are expected to take place for 1-2 days from Saturday 20th April 2013 during periods of good weather.

SURVEY AREA:



Location Map: Gwynt y Môr Offshore Wind Farm

MV Lia is a purpose built aluminium catamaran. The vessel has dimensions of 15.0m by 5.8m and a shallow draft (1.0m). The vessel colour is predominantly white, with 'SURVEY' lettering in dark blue letters on both sides of the vessel. The vessel will operate during daylight hours only and will display the appropriate internationally recognised day shapes and lights during periods of reduced visibility

Call Sign: **MERD8**
Skipper: Padrig Rees
Boat Mobile: +44 (0)7740 023510
E-mail: lia@osirisprojects.co.uk

MV Lia will be operating from Deganwy Marina.



Survey operations will involve towing geophysical survey equipment up to 100m astern of the vessels at variable depths. A wide berth is requested at all times as the vessel will be restricted in ability to manoeuvre.

Further details are available from Osiris Projects at:-
Maritime House, 4 Brunel Road, Croft Business Park, Bromborough, Wirral, CH62 3NY
(www.osirisprojects.co.uk) Tel: 0151 328 1120 Fax: 0151 343 1057

Distribution List:

The UKHO	- hdcfiles@ukho.gov.uk
Trinity House	- navigation.directorate@thls.org
Kingfisher	- kingfisher@seafish.co.uk
MCGA	- navigationsafety@mcga.gov.uk
Osiris Projects	- operations@osirisprojects.co.uk
Deganwy Quays Marina	- jroberts@quaymarinas.com
Welsh Assembly Government Fisheries Unit	- Paul.Rowley@Wales.GSI.Gov.UK
NFFO	- nffo@nffo.org.uk
Gwynt-Y-Mor Marine Coordinator	- gym.mcc@rwe.com
Port of Mostyn	- harbourmaster@portofmostyn.com