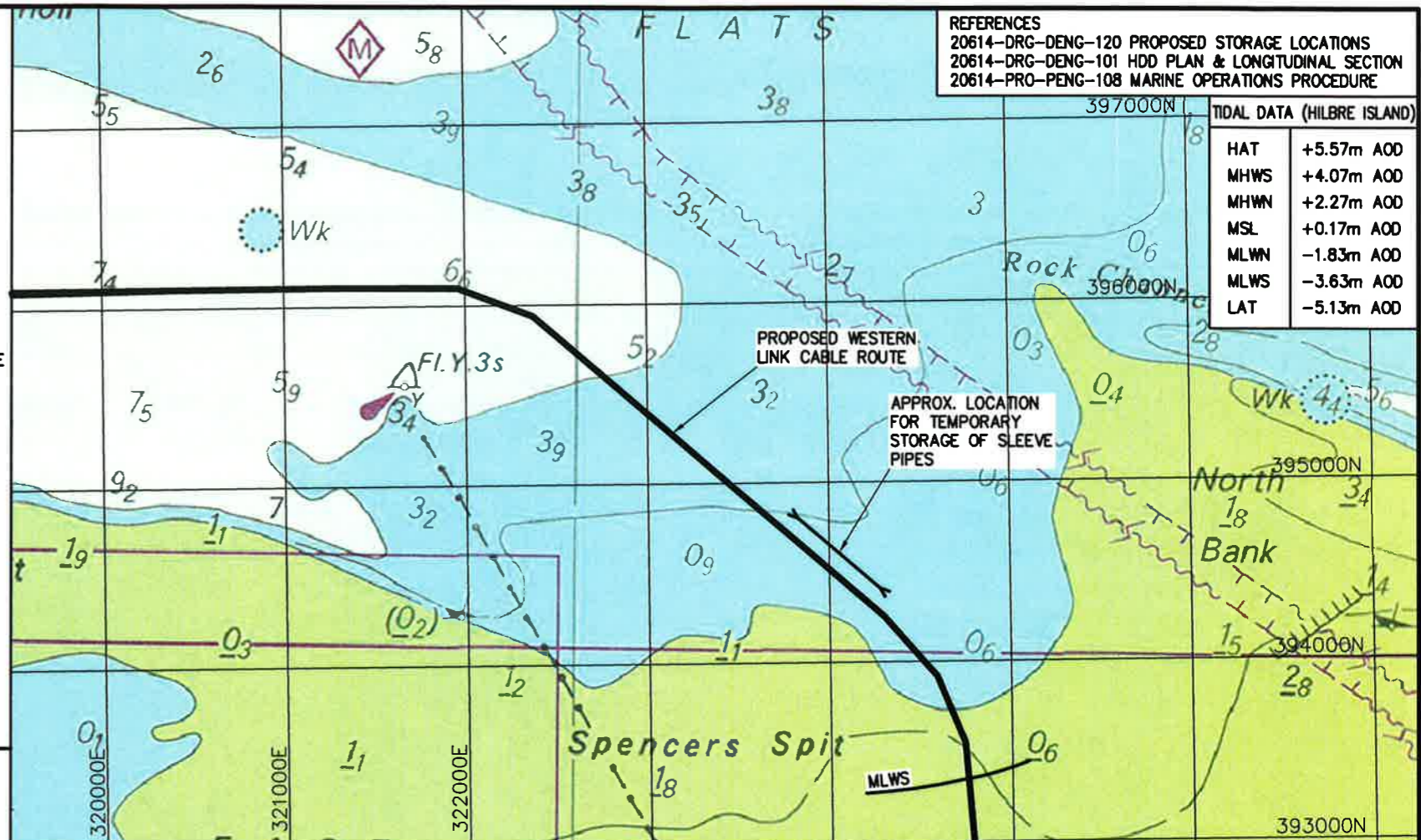


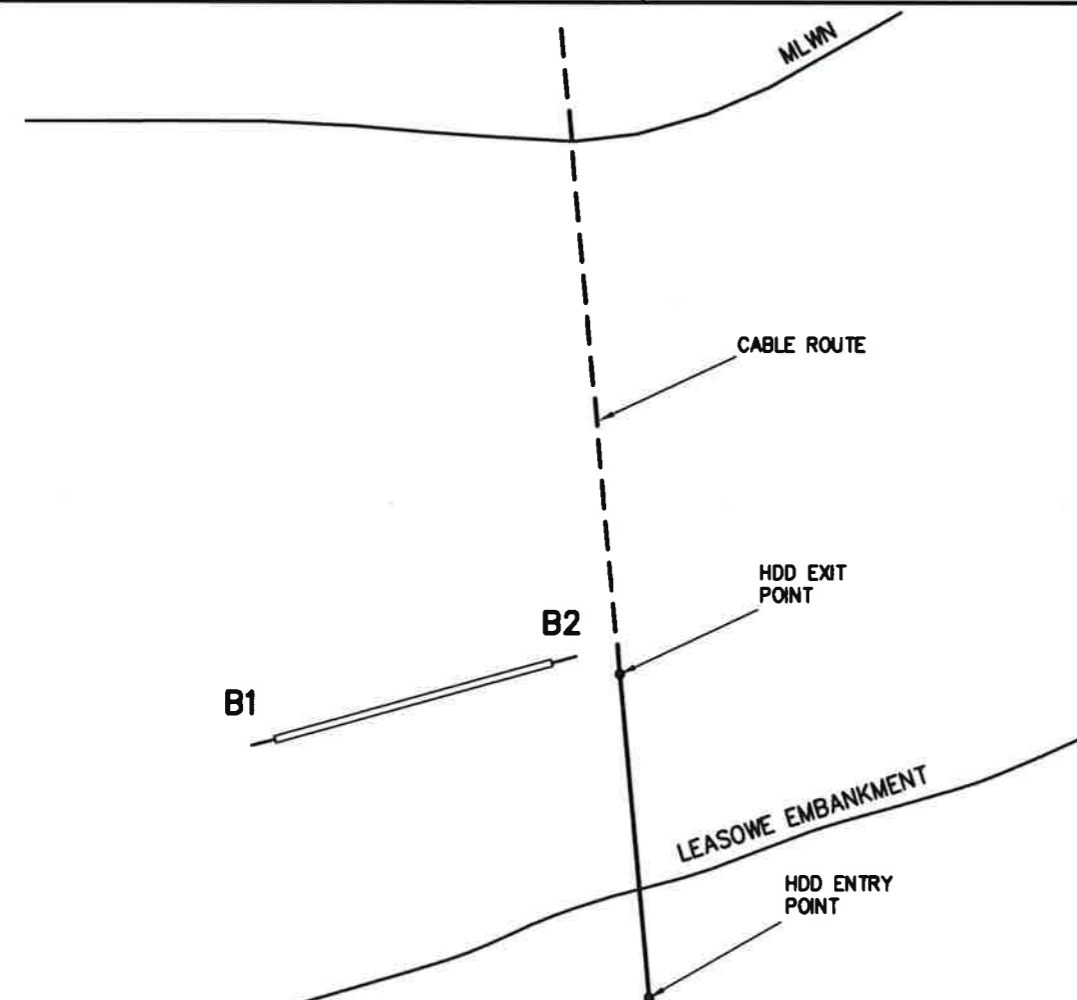
TEMPORARY ANCHOR POSITIONS				
	EASTING (m)	NORTHING (m)	LATITUDE N	LONGITUDE W
A1	323777	394822	53° 26' 40.733"	003° 08' 56.629"
A2	323801	394849	53° 26' 41.619"	003° 08' 55.352"
A3	324307	394362	53° 26' 26.127"	003° 08' 27.509"
A4	324331	394389	53° 26' 27.013"	003° 08' 26.232"

OFFSHORE STORAGE LOCATION



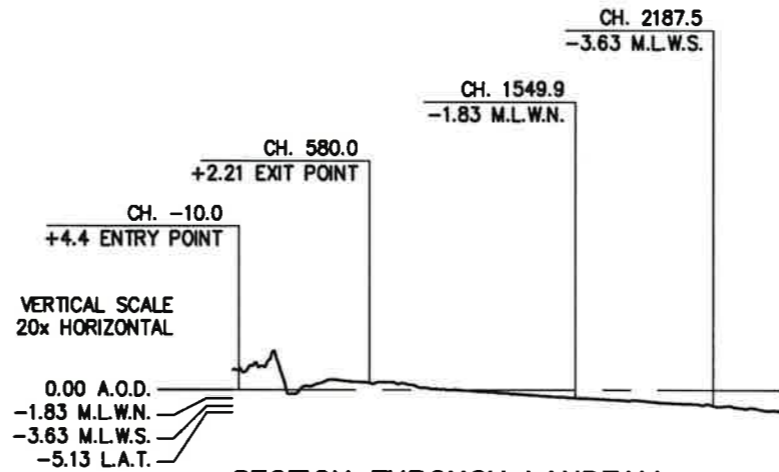
REFERENCES
 20614-DRG-DENG-120 PROPOSED STORAGE LOCATIONS
 20614-DRG-DENG-101 HDD PLAN & LONGITUDINAL SECTION
 20614-PRO-PENG-108 MARINE OPERATIONS PROCEDURE

TIDAL DATA (HILBRE ISLAND)	
HAT	+5.57m AOD
MHWS	+4.07m AOD
MHWN	+2.27m AOD
MSL	+0.17m AOD
MLWN	-1.83m AOD
MLWS	-3.63m AOD
LAT	-5.13m AOD



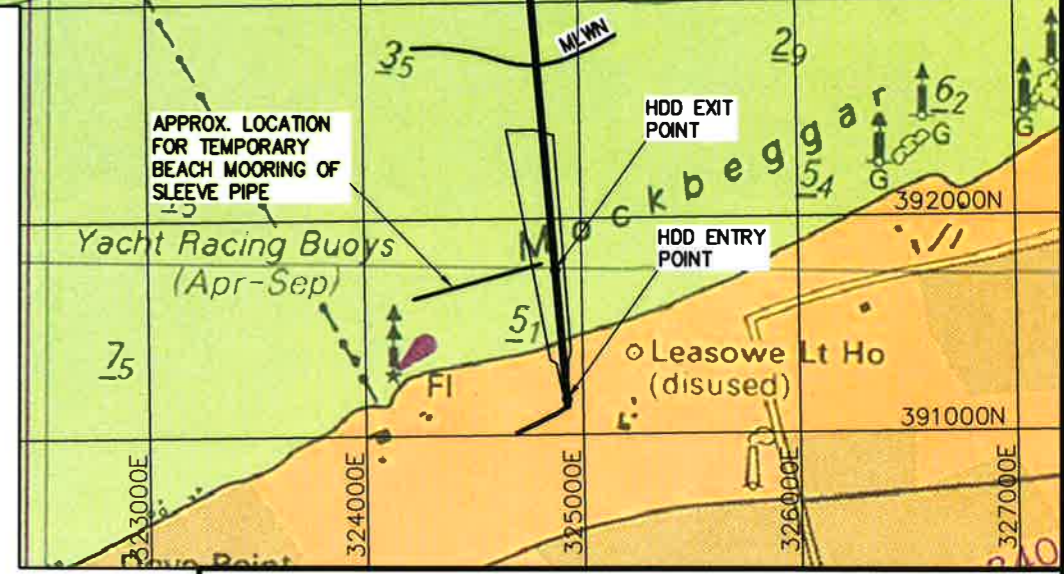
BEACH ANCHORAGE FOR ATTACHMENT OF 90mm DIA. DUCT PIPE

TEMPORARY ANCHOR POSITIONS				
	EASTING (m)	NORTHING (m)	LATITUDE N	LONGITUDE W
B1	324209	391628	53° 24' 57.627"	003° 08' 30.447"
B2	324837	391797	53° 25' 03.418"	003° 07' 56.584"



SECTION THROUGH LANDFALL

- NOTE
1. DEPTHS AND UNDERLINED FIGURES SHOWN ON CHART ARE IN METRES AND ARE REDUCED TO CHART DATUM, WHICH IS APPROXIMATELY EQUAL TO LOWEST ASTRONOMICAL TIDE (LAT). LAT EQUALS -5.13m ABOVE ORDANCE DATUM.
 2. LATITUDES AND LONGITUDES ARE TO WGS84 WITH EASTINGS AND NORTHINGS TO OSGB.
 3. CABLE ROUTE IS TAKEN FROM PRYSMIAN MARINE SURVEY CHART No. IT-PRY-0006-12-001-NU-004_3 (SURVEY DATED 27/07/2012).
 4. FOR DETAILS OF PROPOSED STORAGE LOCATION FOR SLEEVE PIPES REFER TO DRAWING NUMBER 20614-DRG-DENG-120.



LAND & MARINE ENGINEERING LTD.
 Dock Road North,
 Bromborough, Wirral CH62 4LN.

THIS DRAWING AND ITS CONTENTS SHALL NOT BE COPIED, REPRODUCED OR COMMUNICATED TO A THIRD PARTY WITHOUT THE WRITTEN PERMISSION OF LAND & MARINE ENGINEERING LTD.		ISSUED FOR INFORMATION	
ORG SIZE	SCALE	DRG. No.	REV
A2	NTS	20614-DRG-DENG-123	03

**PROPOSED ANCHOR POSITIONS
 WIRRAL LANDFALL**

This document contains information proprietary to Prysmian PowerLink Srl and shall not be reproduced or transferred to other documents or disclosed to others or used for any purpose other than that for which it is furnished without the written permission of Prysmian PowerLink Srl.

PRYSMIAN POWERLINK
 SUBMARINE AND HV CABLE & SYSTEMS

PROJECT: **WESTERN HVDC LINK**

DOCUMENT TITLE: _____

Drawn: X.X. Checked: X.X.

Rev. N°: X-X-X-X-X-X-X-X
 Date: XX-XX-XX Scale: //

REVISIONS	N.	Date:	Description:	Prepared:	Checked:	Approved:
03	13-06-13		OFFSHORE ANCHOR AND PIPE STORAGE LOCATIONS AMENDED	K.S.	G.B.	G.B.
02	05-06-13		OFFSHORE ANCHOR AND PIPE STORAGE LOCATIONS AMENDED	K.S.	G.B.	G.B.
01	04-03-13		FIRST ISSUE	D.S.	G.B.	G.B.