

# NOTICE TO MARINERS

## PORT OF LIVERPOOL

**NO.11 – 2013**

### **WESTERN LINKS POWER CABLE INSTALLATION WORKS.LANDFALL WORKS IN LIVERPOOL BAY.**

Notice is hereby given, that on Thursday 18th July, two 600m long black plastic 450mm (18”) diameter pipes will arrive from Norway and anchor in Liverpool Bay. The position of the anchorage is shown on the attached drawing.

The spudded barge Wilcarry 501 will mobilise to the beach off Leasowe for the high tide period 22nd July to 29th July.

On Tuesday 23rd July, one of the pipes will be disconnected from the anchorage and taken to the beach where it will be positioned alongside the spudded barge, prior to being installed beneath the embankment.

The spudded barge Wilcarry 501 will again mobilise to the beach off Leasowe, for the high tide period 20th August to 27th August.



## **The Mersey Docks and Harbour Company Limited**

Maritime Centre, Port of Liverpool L21 1LA  
Tel: +44 (0)151 949 6000 Fax: +44 (0)151 949 6300

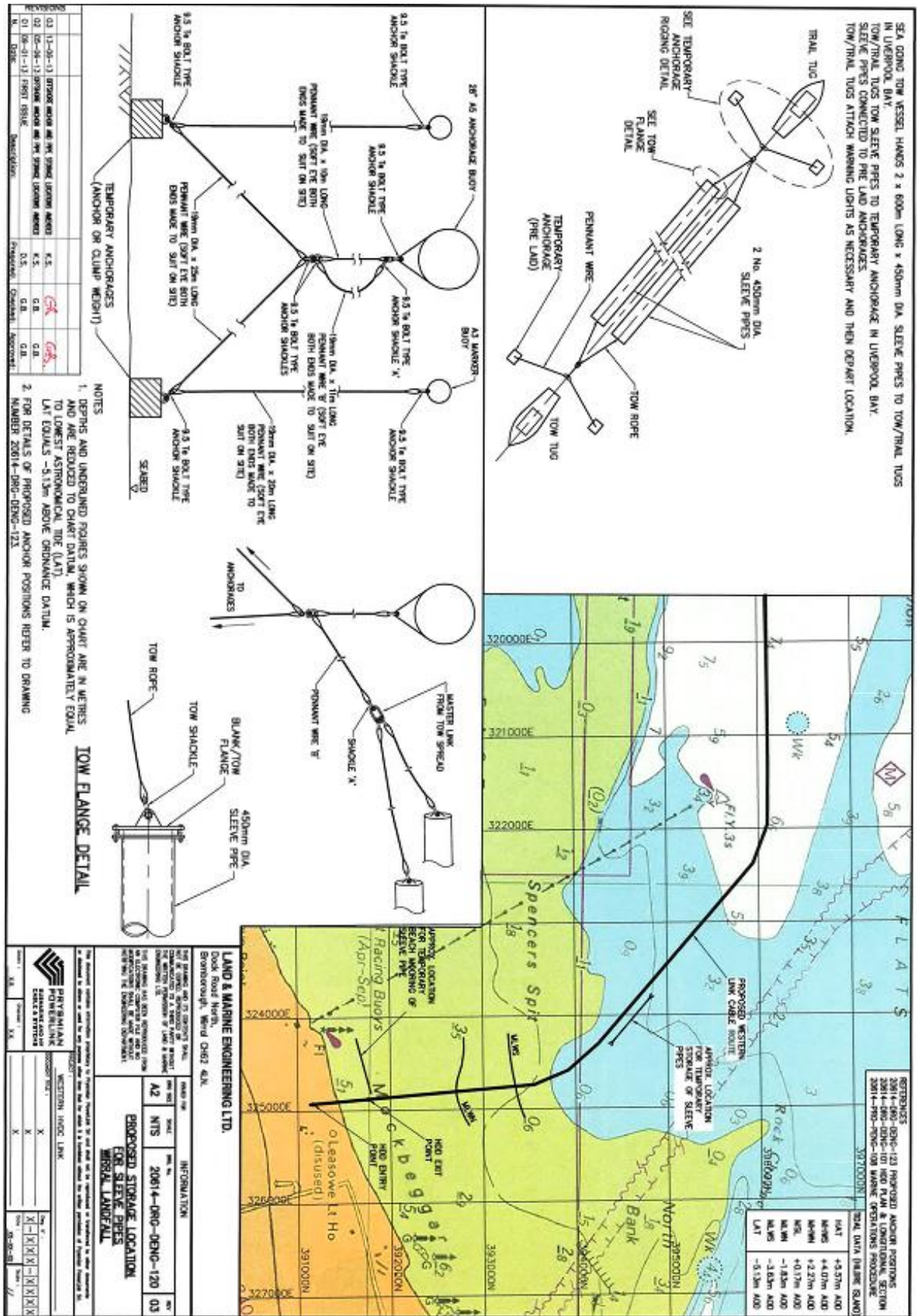
The second pipe will remain at the anchorage until approximately 21st August 2013 (TBC) when it will be disconnected and taken to the beach, where it will be positioned alongside the spudded barge prior to being installed beneath the embankment.

Both pipelines will be fitted with radar reflectors and lights at each end as well as at points along its length. An attendant tug / boat (Vixen and / or Jetstar ) will attend the pipe(s) on a daily basis. Both vessels can be communicated with on VHF channels 12 and 16.

Mariners are asked to navigate with extreme caution when in this area.

# The Mersey Docks and Harbour Company Limited

Maritime Centre, Port of Liverpool L21 1LA  
Tel: +44 (0)151 949 6000 Fax: +44 (0)151 949 6300



Captain S.F. Gallimore  
Harbour Master

4th July 2013