

# NOTICE TO MARINERS

Issue Date: 16<sup>th</sup> September, 2013

## Marine Sea Trial along Western HVDC Link Project route

Mariners are advised that cable laying vessel and towed burial equipment will be tested at several locations in the Irish Sea (Liverpool Bay and North Channel) starting around the 1<sup>st</sup> of October with trials expected to be completed during October 2013.

At six trial locations the cable burial plough will be towed along the seabed for a short distance to evaluate its performance. At a further location the plough will be used to bury a short length of cable in the seabed, which will subsequently be recovered for testing.

At all locations the seabed will be surveyed following the trials to confirm that no obstacles or obstructions are left after completion of the work.

The Laying and Burial operations work will be carried out by **DeepOcean** using **Maersk Assister** Supply Vessel.

During such times the vessel will have restricted ability to manoeuvre and other vessels are requested to pass at a safe speed and distance.

The vessel will monitor VHF Channel 16 at all times.



*Maersk Assister*



*Towed Plough*

## Project Description

The Western HVDC Link Project consists of installing two 600 kV DC submarine cables in the Irish Sea from Ardneil (Scotland) to Wirral (England) for a total route length of about 385 km (Figure 2). The cables will be laid as two separate cables approximately 30 metres apart.

## Sea Trial task

The purpose of the Sea Trial is to verify the trenching plough capability and performance for the expected range of soil conditions in advance of the cable installation (planned to start in early/mid 2014 and be completed by early 2016). The trials will be carried out on seven short route sections as listed below (Appendix - Table 1) for a maximum length of 500 m.

The plough will be deployed from the vessel on the selected location and then towed by the same vessel allowing the trench excavation on the seabed.

At six trial locations the cable burial plough will be towed along the seabed for a short distance to evaluate its performance. No cable will be laid at these locations.

At a further location the plough will be used to bury a short (150m) length of cable in the seabed, which will subsequently be recovered for testing.

At all locations the seabed will be surveyed following the trials to confirm that no obstacles or obstructions are left after completion of the trials. The latitude and longitude of all trial sites are given in Appendix 1 of this notice.

**Figure 1 – Typical towing arrangement of a plough and vessel**

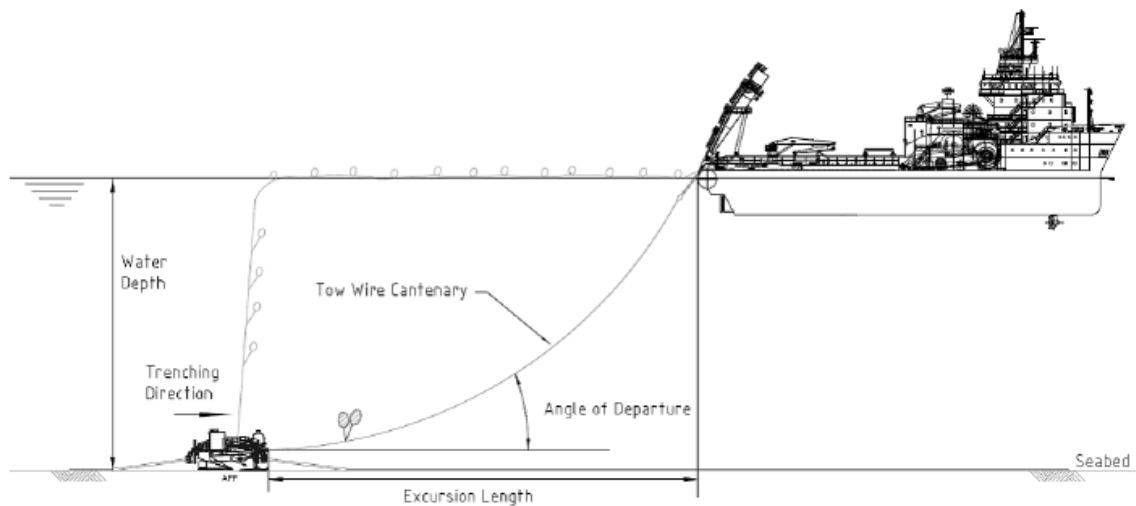


Figure 2 – Western Link cable route and water depths

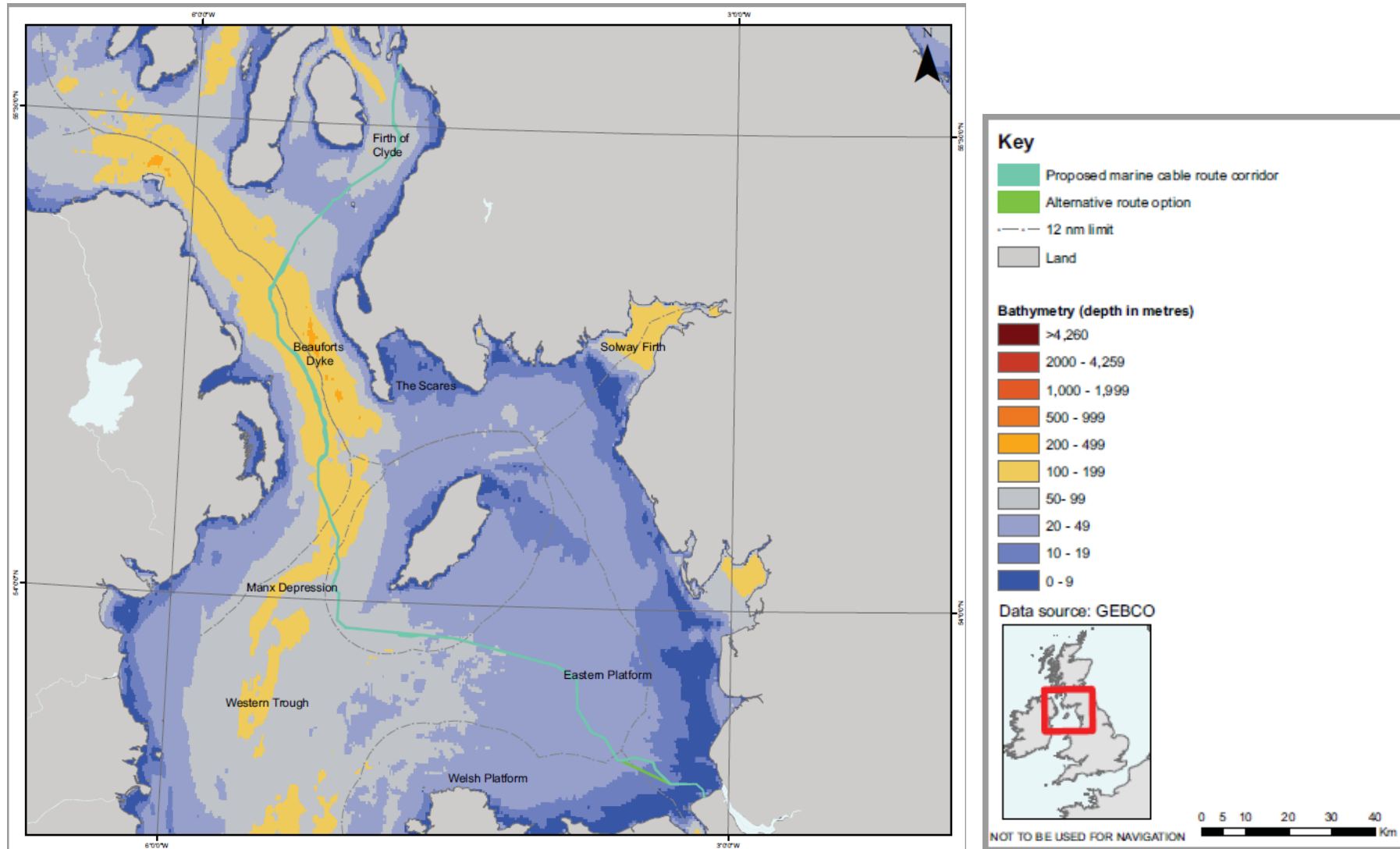


Figure 3 – Cable route and trial sites 1 2 and 3. Latitudes and longitudes for all trial site locations are given in Appendix 1.

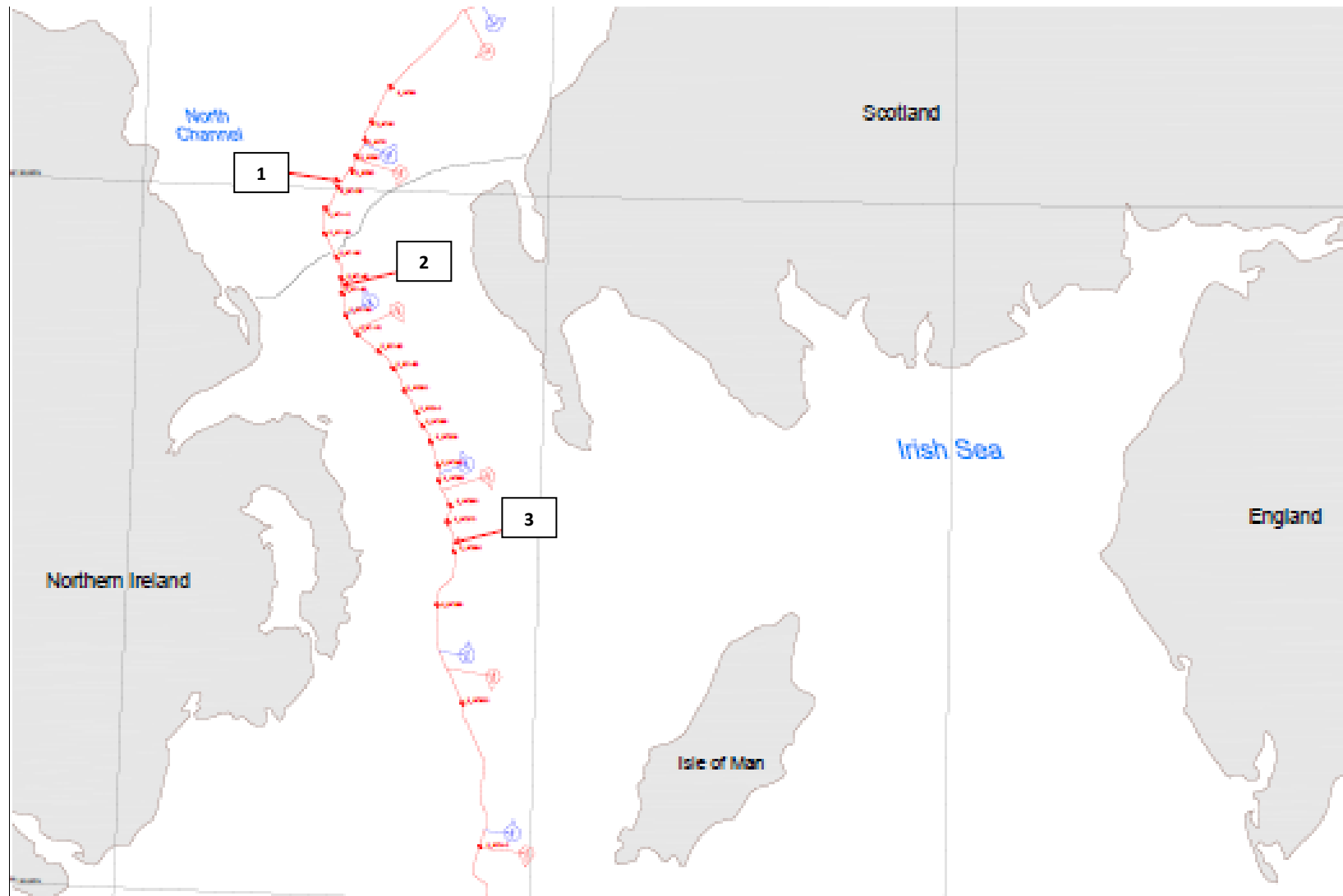
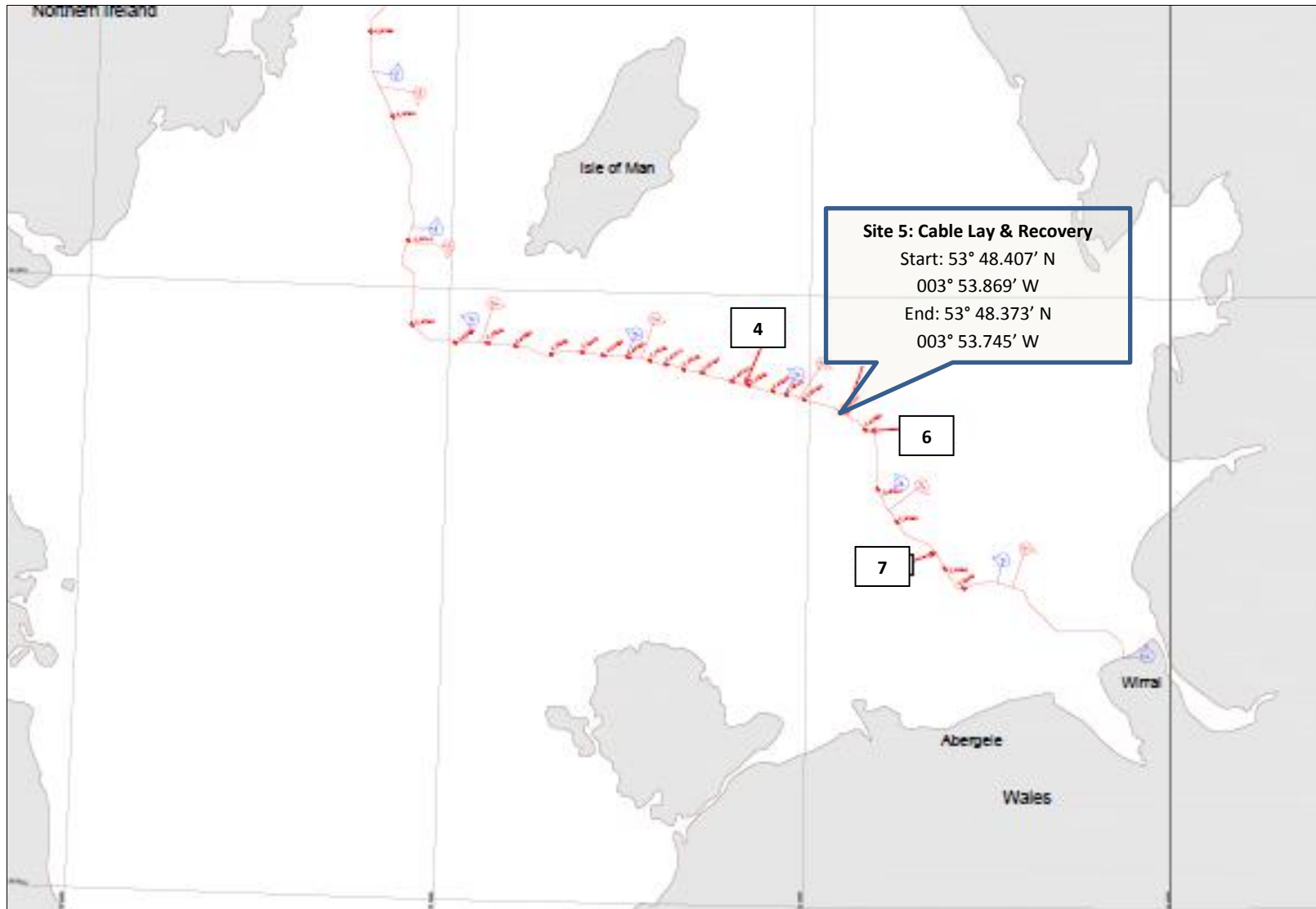


Figure 5 – Cable route and trial sites 4 5 6 and 7. A short (150m) length of cable will be laid at location 5, which is highlighted. Latitudes and longitudes for all trial site locations are given in Appendix 1.



**APPENDIX 1**

**Table 1 – Western Link Sea Trial locations**

Location	From			To		
	KP	Grid Coordinates [WGS84 - UTM 30N]	Spheroid Coordinates [WGS 84]	KP	Grid Coordinates [WGS84 - UTM 30N]	Spheroid Coordinates [WGS 84]
1	95.2	338938.75 E 6098258.87 N	55° 0.306' N 005° 31.105' W	95.4	338853.59 E 6098078.38 N	55° 0.207' N 005° 31.179' W
2	113	339469.85 E 6081984.21 N	54° 51.549' N 005° 30.062' W	113.2	339485.07 E 6081784.79 N	54° 51.442' N 005° 30.041' W
3	160	337033.46 E 6041030.52 N	54° 29.441' N 005° 12.966' W	160.3	357078.11 E 6040733.87 N	54° 29.643' N 005° 12.405' W
4	290	422840.96 E 5967835.53 N	53° 51.197' N 004° 10.381' W	290.4	423234.77 E 5967765.43 N	53° 51.162' N 004° 10.021' W
5*	309.15	440877.51 E 5962399.27 N	53° 48.407' N 003° 53.869' W	309.3	441012.49 E 5962333.85 N	53° 48.373' N 003° 53.745' W
6	315.5	446045.38 E 5958941.49 N	53° 46.577' N 003° 49.124' W	315.8	446204.26 E 5958687.02 N	53° 46.440' N 003° 48.977' W
7	342.9	457637.63 E 5936540.61 N	53° 34.561' N 003° 38.387' W	343.1	457736.04 E 5936366.49 N	53° 34.467' N 003° 38.297' W

**Note:**

\* A 150m length of cable will be buried in the seabed and subsequently recovered at location 5. No cable will be laid at any of the other trial locations.

**Contact Details:**

Further enquiries should be addressed to the following contacts:

- Jim Andrews (AWJ Marine), T: +44(0)845-880-2540, M: +44(0)7908-225865, jim@awjmarine.co.uk that will also coordinate the Fisheries liaison for this operation
- Alberto Pirovano (Prysmian Project Manager) M: + 39 335 5962819, alberto.pirovano@prysmiangroup.com
- DeepOcean Offshore Manager, Maersk Assister: +85239062842, OffshoreManager@do-assister.com
- Vessel Master, Maersk Assister: :+85239062842, 059assiste@maersk.com

## Distribution List:

natkinson@abports.co.uk  
barrowmc@abports.co.uk  
nridehalgh@abports.co.uk  
alasdair.wilkie@hiberniaatlantic.com  
jon.ford@cw.com  
paul.o'rouke@eirgrid.com  
keith.3.brooks@bt.com  
maurice.smith@esbi.com  
emmet.mcfadden@mutual-energy.com  
mdurcan@bge.ie  
daniel.longhurst@bhpbilliton.com  
marine.team@bt.com  
peter.jamieson@virginmedia.co.uk  
ron.bailey@clydeport.co.uk  
dtd@cumbriasfc.fsnet.co.uk  
nkelly@doehle-iom.com  
xmrob@dongenergy.dk  
walneytraffic@dongenergy.dk  
lykup@dongenergy.co.uk  
stliv@dongenergy.co.uk  
ianre@dongenergy.co.uk  
vanoc@dongenergy.co.uk  
abat@eircom.net  
peter.hodgetts@thecrownstate.co.uk  
hq@stratmarine.com  
helen.elphick@thecrownstate.co.uk  
portcontrol@stenaline.com  
holyheadcoastguard@mcga.gov.uk  
wm\_holyhead@mcga.gov.uk  
christopherkeogh@transport.ie  
andrew.sheen@irishferries.com  
d.obrien@cil.ie  
chris.clark@gov.im  
marine.operations.centre@gov.im  
michael.brew@gov.im  
mark.woodward@steampacket.com  
kingfisher@seafish.co.uk  
liverpool\_mo@mcga.gov.uk  
colin.brown@mcga.gov.uk  
mail@liverpoolmarina.com  
annette.stube@maersk.com  
kenneth.poole@cemex.com  
Joyce.johnson@mcga.gov.uk  
Wm\_liverpool@mcga.gov.uk  
doe.iemonitoring@doeni.gov.uk  
enquiries@drdni.gov.uk  
information@detini.gov.uk  
bryan.davies@heyshamport.com  
steve.gallimore@merseydocks.co.uk  
vts.portoperations@merseydocks.co.uk  
will.calderbank@portofmostyn.com  
ian@dickies.co.uk  
tony@ramsey-steamship.com  
scalden@dsml.co.uk  
sprince@dsml.co.uk  
caroline.price@rya.org.uk, ,  
erecya@talktalk.net  
michael.moore9@btinternet.com  
alana.murphy@rya.org.uk  
stuart.carruthers@rya.org.uk  
dlw@seatruckgroup.co.uk  
EnergyConsents@scotland.gsi.gov.uk  
econsentsadmin@scotland.gsi.gov.uk  
s.alexander@sff.co.uk  
n.lauder@sff.co.uk  
john.bateman@shell.com  
wyn.parry@stenaline.com  
osbornted@aol.com  
jonwarren@merseywharf.co.uk  
navigation.directorate@this.org  
keith.tatman@mcga.gov.uk  
andre.coccucio@mcga.gov.uk  
colin.brown@mcga.gov.uk  
alec.keep@mcga.gov.uk  
paul.townsend@mcga.gov.uk  
hdcf@ukho.gov.uk  
hcdfiles@ukho.gov.uk  
admin@welshsailing.org  
wag-en@mailuk.custhelp.com  
info@whitehavenhc.org.uk  
DeshWebCorrespondence@Wales.GSI.Gov.UK  
DEandT@wales.gsi.gov.uk  
businessdevelopmentdepartment3@wales.gsi.gov.uk  
robert.floyd@wales.gsi.gov.uk  
fisheries@wales.gsi.gov.uk  
bdeas@nffo.org.uk  
dale.rodmeil@nffo.org.uk  
b.armstrong@sff.co.uk



Stevie.travis@mcga.gov.uk  
Alec.keep@mcga.gov.uk  
info@m-h-a.co.uk  
MS.marinelicensing@scotland.gsi.gov.uk  
danny.everitt@mscuk.com  
blackpool@marinemanagement.org.uk  
neil.wellum@marinemanagement.org.uk  
Alan.Gibson@marinemanagement.org.uk  
s.atkins@nw-ifca.gov.uk  
navigation@nlb.org.uk  
navigation@nlb.org.uk  
Fleet.Operations@POferries.com  
info@clydeport.co.uk  
info@rnli.org.uk  
iomfishermen@manx.net  
Charlie.Mawer@clydeport.co.uk  
jim@awjmarine.co.uk  
norman.leece@mezeron.com  
info@mezeron.com  
'nwplanning@naturalengland.org.uk'  
hdcfiles@ukho.gov.uk  
clive.lane@mcga.gov.uk  
WM.clyde@mcga.gov.uk  
wm.holyhead@mcga.gov.uk  
Kevin.Best@BHPBilliton.com

sff@sff.co.uk  
CETI@Centrica.com  
david.crowther@centrica.com  
jim@awjmarine.co.uk  
gedherby@wirral.gov.uk  
josephanik@wirral.gov.uk  
johnentwistle@wirral.gov.uk  
markthomas@wirral.gov.uk  
jmichel@north-ayrshire.gov.uk  
clyde.coastguard@mcga.gov.uk  
freighthelp@poferries.com  
info.uk@stenaline.com  
crousing@rya.co.uk  
info@mezeron.com  
Ron.Bailey@clydeport.co.uk  
Michael.Brew@gov.im  
iomfishermen@manx.net  
hannah.birtles@naturalengland.org.uk  
'claire.storey@naturalengland.org.uk'  
hdcfiles@ukho.gov.uk  
graeme.proctor@mcga.gov.uk  
wm.liverpool@mcga.gov.uk  
WM.Belfast@mcga.gov.uk  
Robert.Whiteley@naturalengland.org.uk