

ANGLING IN THE GWYNT Y MÔR WIND FARM SITE

We are very grateful for your cooperation during the construction of Gwynt y Môr over the past 33 months. Although construction work is continuing, it is not likely to have a detrimental effect on angling activities within the site. Therefore from 1st October 2014, angling can resume within the Gwynt y Môr wind farm site as long as the safety measures referred to below are adhered to.

This notice provides information about the measures in place on the site to promote the safety of all angling vessels and operators.

Please make sure that you have read this notice and understand these safety measures before you enter the site. If you are at all uncertain about the safety measures, please contact the Marine Coordinator for the site (contact details are given later in this notice).

Location of the windfarm

The boundary of the windfarm is marked on all of the current and corrected UK Hydrographic Office charts for the area, and all of the current and updated electronic charts for navigational plotters.

Navigation information can be found in the UK Hydrographic Office Notice to Mariners 4308/2011 (available [here](#)) and the accompanying chart (available [here](#)) and background information ([here](#)). There are nine cardinal buoys marking the perimeter of the windfarm. Within the windfarm areas there may be underwater and seabed obstructions.

For your convenience, a leaflet showing the location of the windfarm, wind turbines, cables and substations can be found in a Kingfisher Awareness leaflet that can be downloaded [here](#). The awareness chart is appended to this notice for your information.

Exclusion Zones

DECC (Department of Energy and Climate Change) allow us to enforce a 50m exclusion zone around every asset infield (in this case the 160 wind turbines and two offshore substations) during the construction phase of the project and during any maintenance work, as well as a 500m exclusion zone around every vessel engaged in construction infield. These exclusions are intended to promote the safety of all vessels, their crew and any passengers while in the windfarm area.

Commissioning and construction work is still underway on the wind turbines and offshore substations, and the 50m safety exclusion zones will remain in force until we issue formal notice that work is complete.

Safety on site

In addition to the above, Rule 18 of the International Regulations for the Prevention Of Collisions At Sea (Responsibilities Between Vessels) (the ColRegs) indicates that all vessels shall so far as possible keep clear of vessels restricted in their ability to manoeuvre. All construction vessels when engaged in activity at Gwynt y Môr Offshore Wind Farm are restricted in their ability to manoeuvre and will show the correct day shapes / night lights to reflect this.

Likewise, the crew transfer vessels (CTV) and other vessels deployed by the wind farm will be instructed to keep clear of any vessel displaying the correct lights / shapes to indicate that they are engaged in fishing. The CTV operators will be made aware of the change in access to the site by anglers and will be instructed to keep a safe passing distance from angling vessels at all times.

Operational procedures

In order to promote the safety of your vessel and passengers, you are advised to contact the Gwynt y Môr Marine Coordinator before entering the site to ensure that you are aware of any hazards or activity on site.

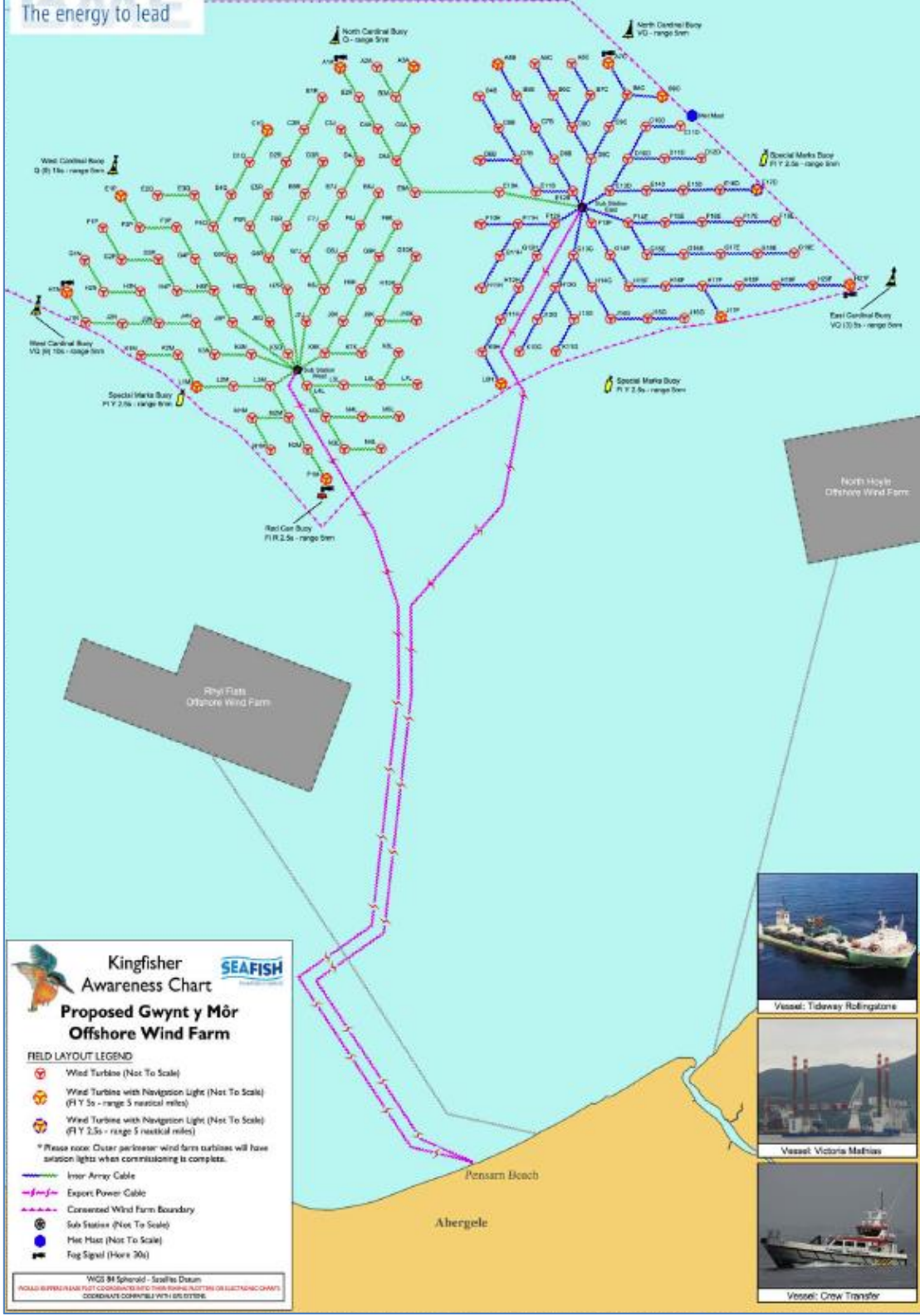
Contact details

Useful contact details for angling vessels intending to fish in the windfarm are given below:-

- Gwynt y Môr Marine Coordinator
 - VHF Channel 16
 - Phone number 07827 244495 (mobile) or 0151 210 2388 (landline). Both are manned 24 hours.
- Fishery Liaison Officer, Jim Andrews
 - Phone number 07908-225865
 - E-mail jim@awjmarine.co.uk

Issued by Gwynt y Môr Offshore Wind Farm Ltd.

September 2014



Location of the Gwynt y Môr Windfarm
Taken from Kingfisher Wind Farm Awareness Flyer (available [here](#))