

NOTICE TO MARINERS

Issue Date: 15th March, 2017

Western Link Project

Cable installation – Exposed cable sections

Mariners are advised that following the completion of Campaign 3, 4a, 4b and 6, there are sections of exposed cable along the Western HVDC Link cable route as detailed in **Table 1 and Table 2**.

This notice provides an updated list of the sections of exposed cable including the planned cable crossing locations previously communicated through notices to mariners. These sections are currently being monitored by Guard Vessels which have been deployed locally.

Note these sections mostly represent planned cable crossings, two areas of exposed cable that will be joined and buried, in addition to some small exposures associated with hard soils areas that are under review to reduce the requirement for protection by rocks on the cable route.

Details of the vessels that will be used to carry out this protection work and the nature of this work will be provided in a separate notice to mariners.

Vessels are requested to pass at a safe speed and distance and fishing vessels are advised to remain a safe distance (approximately 1.5 nautical miles) from the areas identified in Table 1 & 2. Guard Vessels have been deployed at each location to aid in monitoring the exposed areas and will advise of safe distances locally.

Table 1 – Exposed sections & Guard Vessel Locations for Campaign 4 a & b cable in the Clyde

		Coordinates			
	KP	Easting	Northing	Latitude	Longitude
From	1100	381293,02	6172943,81	55°41.265'N	004°53.296'W
To	5867	379964,93	6168568,75	55°38.888'N	004°54.448'W
From	22500	379019,19	6152137,9	55 30.020N	4 54.917W
To	22800	379209,72	6151906,4	55 29.899N	4 54.730W
From	24700	380339,81	6150379,5	55 29.092N	4 53.618W
To	25000	380517,68	6150138,1	55 28.965N	4 53.443W
From*	56200	361667,79	6128141,1	55 16.816N	5 10.674W
To*	60900	358056,93	6125394,0	55 15.274N	5 13.999W

** These are exposed cable ends that will be jointed together after the completion of Campaign 4b for subsequent protection.*

Table 2 – Exposed sections & Guard Vessel Locations for Campaign 3 & Campaign 6 cable lengths in the North Channel.

		Coordinates			
	KP	Easting	Northing	Latitude	Longitude
From	69600	352221,11	6118990,3	55 11.722N	5 19.302W
To	70000	351926,93	6118719,5	55 11.570N	5 19.570W
From*	158100	356928,11	6042941,64	54 30.830N	5 12.608W
To*	168500	354417,29	6033524,12	54 25.713N	5 14.655W
From	172500	354466,5	6028535,71	54 23.026N	5 14.463W
To	173200	354451,4	6028835,19	54 23.187N	5 14.486W
From	175500	354549,21	6025537,28	54 21.412N	5 14.299W
To	176200	354541,01	6025837,18	54 21.573N	5 14.315W

** There are some small areas of exposure in this section that are associated with hard seabed conditions where burial has not yet been achieved. The requirements for cable protection in this area are under review to minimise rock placement.*

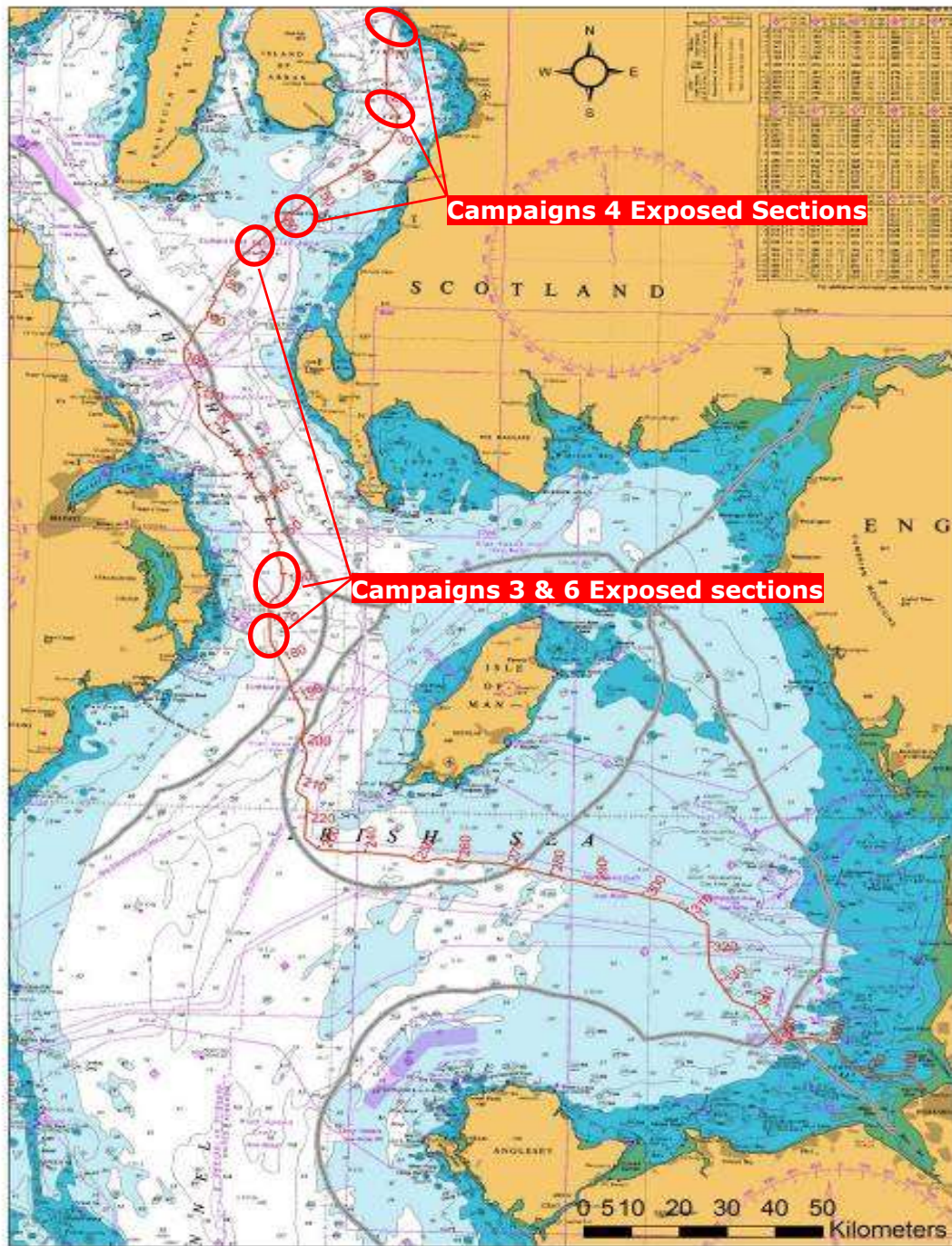


Figure 1 – Western Link cable route – Campaign 4 and Campaign 3 & 6 exposed sections

Contact Details:

Further enquiries should be addressed to the following contacts:

AWJ Marine

Jim Andrews
(who will also coordinate the Fisheries liaison for this operation)
jim@awjmarine.co.uk
Office: +44 (0) 845-880-2540,
Mobile: +44 (0) 7908-225865,

Prysmian Project Manager

Alberto Pirovano
alberto.pirovano@prysmiangroup.com
Office: +39 02 6449 33590
Mobile: +39 335 5962819

Distribution List:

abat@eircom.net
admin@welshsailing.org
Alan.Gibson@marinemanagement.org.uk
alana.murphy@rya.org.uk
alasdair.wilkie@hiberniaatlantic.com
Alec.Keep@mcga.gov.uk
andre.coccucio@mcga.gov.uk
andrew.sheen@irishferries.com
annette.stube@maersk.com
b.armstrong@sff.co.uk
barrowmc@abports.co.uk
bdeas@nffo.org.uk
blackpool@marinemanagement.org.uk
bryan.davies@heyshamport.com
businessdevelopmentdepartment3@wales.gsi.gov.uk
caroline.price@rya.org.uk, ,
CETI@Centrica.com
Charlie.Mawer@clydeport.co.uk
chris.clark@gov.im
christopherkeogh@transport.ie
'claire.storey@naturalengland.org.uk'
clive.lane@mcga.gov.uk
clyde.coastguard@mcga.gov.uk
colin.brown@mcga.gov.uk
colin.brown@mcga.gov.uk
crousing@rya.co.uk
d.obrien@cil.ie
dale.rodmeil@nffo.org.uk
MerseyMarineManagers@Peelports.com
danny.everitt@mscuk.com
dannyo'brien@bge.ie
david.crowther@centrica.com
DEandT@wales.gsi.gov.uk
DeshWebCorrespondence@Wales.GSI.Gov.UK
dlw@seatruckgroup.co.uk
doe.iemonitoring@doeni.gov.uk
doug.percy@transsectormarine.co.uk
dtd@cumbriasfc.fsnet.co.uk
econsentsadmin@scotland.gsi.gov.uk
emmet.mcfadden@mutual-energy.com
emmet.mcfadden@mutual-energy.com
EnergyConsents@scotland.gsi.gov.uk
enquiries@drdni.gov.uk
erecra@talktalk.net
fisheries@wales.gsi.gov.uk
jon.ford@cw.com
jon.ford@vodafone.com
jonwarren@merseywharf.co.uk
josephanik@wirral.gov.uk
Joyce.johnson@mcga.gov.uk
keith.3.brooks@bt.com
keith.3.brooks@bt.com
keith.tatman@mcga.gov.uk
kenneth.poole@cemex.com
Kevin.Best@BHPBilliton.com
kingfisher@seafish.co.uk
liverpool_mo@mcga.gov.uk
lykup@dongenergy.co.uk
mail@liverpoolmarina.com
marine.operations.centre@gov.im
marine.team@bt.com
Mark.Wilber@external.eni.com
mark.woodward@steampacket.com
markthomas@wirral.gov.uk
maurice.smith@esbi.com
mdurcan@bge.ie
Michael.Brew@gov.im
michael.moore9@btinternet.com
mick.mcguckin@mutual-energy.com
MS.marinelicensing@scotland.gsi.gov.uk
n.lauder@sff.co.uk
natkinson@abports.co.uk
navigation.directorate@thls.org
navigation@nlb.org.uk
neil.wellum@marinemanagement.org.uk
nkelly@doehle-iom.com
norman.leece@mezeron.com
nridehalgh@abports.co.uk
'nwplanning@naturalengland.org.uk'
osbornted@aol.com
paul.o'rourke@eirgrid.com
paul.townsend@mcga.gov.uk
peter.hodgetts@thecrownestate.co.uk
peter.jamieson@virginmedia.co.uk
peter.jordan@sse.com
portcontrol@stenaline.com
robert.floyd@wales.gsi.gov.uk
Robert.Whiteley@naturalengland.org.uk
Ron.Bailey@clydeport.co.uk
s.alexander@sff.co.uk

Fleet.Operations@POferries.com
freighthelp@poferries.com
gedherby@wirral.gov.uk
graeme.proctor@mcga.gov.uk
Gurpal.Ghotra@mutual-energy.com
hannah.birtles@naturalengland.org.uk
hcdfiles@ukho.gov.uk
hdcf@ukho.gov.uk
hdcfiles@ukho.gov.uk
helen.elphick@thecrownstate.co.uk
holyheadcoastguard@mcga.gov.uk
hq@stratmarine.com
ian@dickies.co.uk
ianre@dongenergy.co.uk
info.uk@stenaline.com
info@clydeport.co.uk
info@mezeron.com
info@m-h-a.co.uk
info@rnli.org.uk
info@whitehavenhc.org.uk
information@detini.gov.uk
iomfishermen@manx.net
jim@awjmarine.co.uk
jmichel@north-ayrshire.gov.uk
john.bateman@shell.com
johnentwistle@wirral.gov.uk

s.atkins@nw-ifca.gov.uk
scalden@dsml.co.uk
sff@sff.co.uk
sprince@dsml.co.uk
stephen.hemphill@mutual-energy.com
steve.davie@xodusgroup.com
steve.gallimore@merseydocks.co.uk
Stevie.travis@mcga.gov.uk
stliv@dongenergy.co.uk
stuart.carruthers@rya.org.uk
Tariq.Amin@eni.com
tony@ramsey-steamship.com
vanoc@dongenergy.co.uk
vts.portoperations@merseydocks.co.uk
wag-en@mailuk.custhelp.com
walneytraffic@dongenergy.dk
will.calderbank@portofmostyn.com
WM.Belfast@mcga.gov.uk
WM.clyde@mcga.gov.uk
wm.holyhead@mcga.gov.uk
wm.liverpool@mcga.gov.uk
wm_holyhead@mcga.gov.uk
Wm_liverpool@mcga.gov.uk
wyn.parry@stenaline.com
XASCO@dongenergy.co.uk
xmrob@dongenergy.dk