

NOTICE TO MARINERS

Please be advised that A-2-Sea Solutions will be carrying out marine survey operations along the IOM-UK Submarine Electrical Interconnector cable. The marine survey will extend from Blackpool, UK along the length of the cable route to Douglas, IOM as shown in Figure 2.

Survey operations are expected to commence from the end of October into mid-November for approximately 1-2 weeks depending on weather conditions. Survey work will be undertaken onboard the survey vessel 'Manor Brunel' shown in Figure 1. Manor Brunel (19.6m LOA) will be underway throughout operations sailing survey lines at 4-8 knots. Manor Brunel will exhibit the lights and shapes prescribed by the International Regulations for Preventing Collisions at Sea and will maintain a listening watch on VHF Channel 16.

The survey area constitutes a 50m corridor centre on the cable sections. Survey operations will involve the use of hull mounted equipment and towed equipment below the water surface, up to 100m behind the vessel. A wide berth is requested at all times as the vessel will be restricted in her ability to manoeuvre.

Survey Area

The survey area constitutes a 50m corridor centred on the cable sections detailed below.

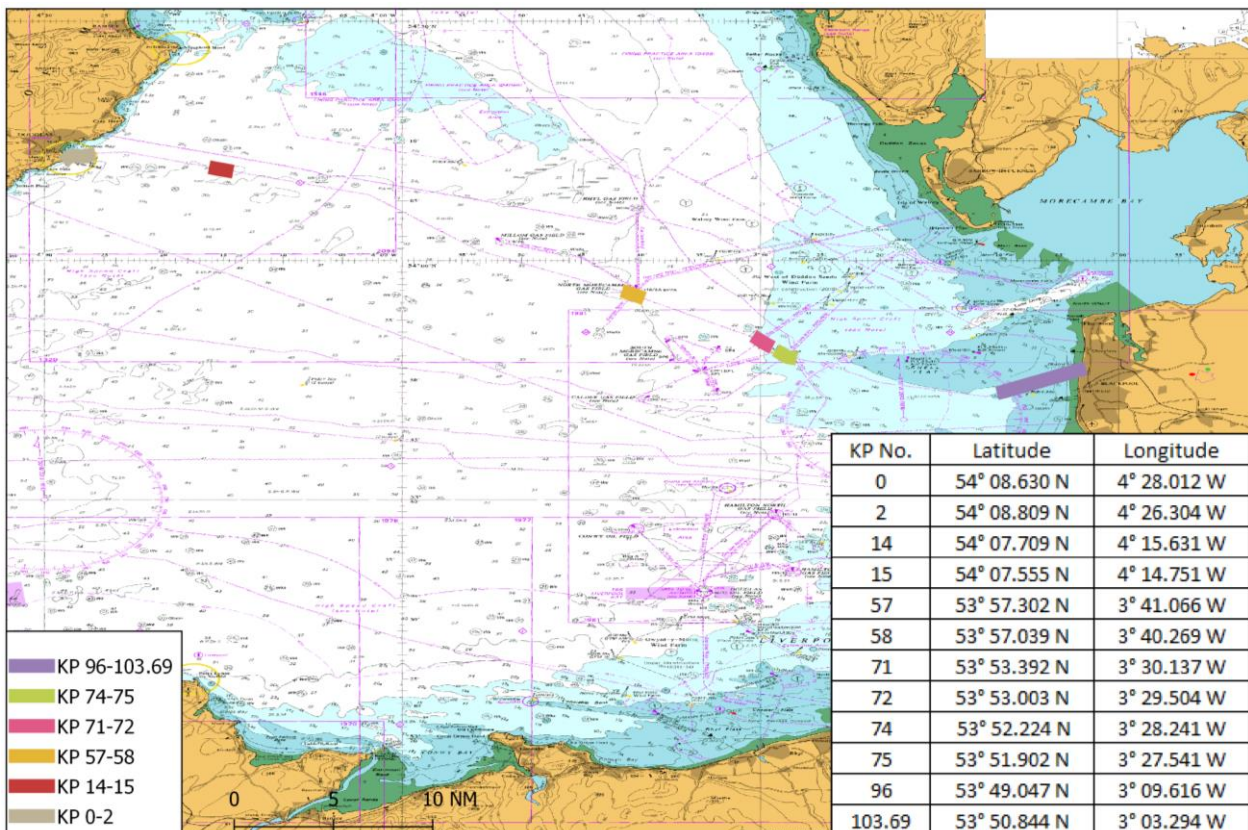


Figure 2: Survey area overview of the IOM-UK Manx Utilities Cable

Vessel

Name: Manor Brunel
Length: 19.6m
Breadth: 5.8m
Draft: 2m
Call sign: MWUA4



Figure 1: Vessel Manor Brunel

Contact

For further information please contact Christopher Briggs (Project Manager) +44 7932 912553.