

RWE Rhyl Flats
Port of Mostyn
Coast Road
Mostyn
Flintshire CH8 9HE
Tel: 08450714475

thomas.davies@rwe.com - Operations Engineer
bill.smith@rwe.com - Production Manager
michael.bradley@rwe.com - General Manager

Issue **02-2024**

Date: **25-09-2024**

NOTICE TO MARINERS

Introduction:

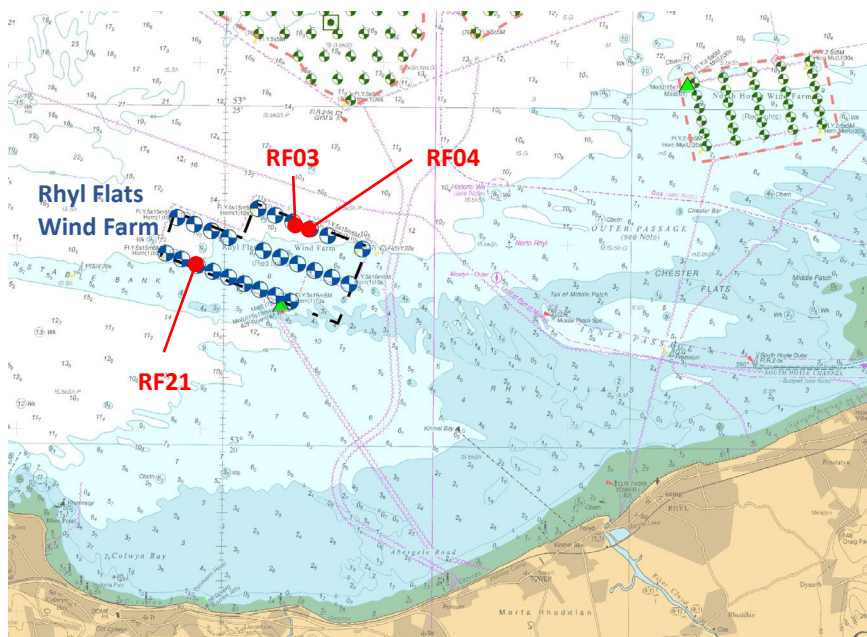
Please be advised that RWE will be carrying out urgent maintenance operations involving major component exchange including heavy lifting at Rhyl Flats Wind Farm situated off the North Wales Coast.

Date & Location:

Operations will take place at RF04, RF03 and RF21 and will commence on or around **04th October 2024** and will take approximately 3 days to complete subject to weather.

Rhyl Flats Offshore Windfarm

REF	LATITUDE	LONGITUDE
RF 04	53°23,194 N	-3°37,8895 W
RF 03	53°23,2915 N	-3°38,3199 W
RF21	53°22,6427 N	-3°40,2711 W



Vessel Details:

MPI Resolution is a 6 legged Jack-Up platform (Wind Farm Installation Vessel) measuring 130 metres in length by 38 metres in width. It has a 4.5 metre draft, coloured blue and white. When jacked up the MPI Adventure will be marked and displaying lights and day symbols in accordance with an Offshore Structure.



Requirements:

Mariners are requested to keep well clear and pass slowly, particularly when the craft is manoeuvring or during lifting operations.

Vessels are requested to:-

- (1) Give the MPI Resolution a wide berth of 500m during these operations
- (2) Gain permission from MPI Adventure prior to access / approach if required within the 500m zone

Vessel Contact details:

MPI Resolution

IMO Number: 9260134

callsign: PCJM

Vessel Master: TBC

E-mail: 0853.cpt@vanoord.com / 0853.bdg@vanoord.com

Further details are available from RWE Renewables Ltd at:

RWE Rhyl Flats,
Port of Mostyn,
Holywell,
Flintshire,
CH8 9HE
Tel: 0845 071 4475

Distribution List:

Radio Navigation Warnings

- Offshore.energy@ukho.gov.uk

The UKHO

- navwarnings@ukho.gov.uk

Trinity House

- sdr@ukho.gov.uk

Kingfisher

- navigation.directorate@thls.org

Operations North Hoyle

- kingfisher@seafish.co.uk

Operations Rhyl Flats

- Daniel.James@rwe.com

+ local mariners as per email distribution

- Bill.Smith@rwe.com & thomas.davies@rwe.com